

# DIMENSIONS & DATA CERTIFIED FOR:

Representative:

Order:

Customer:

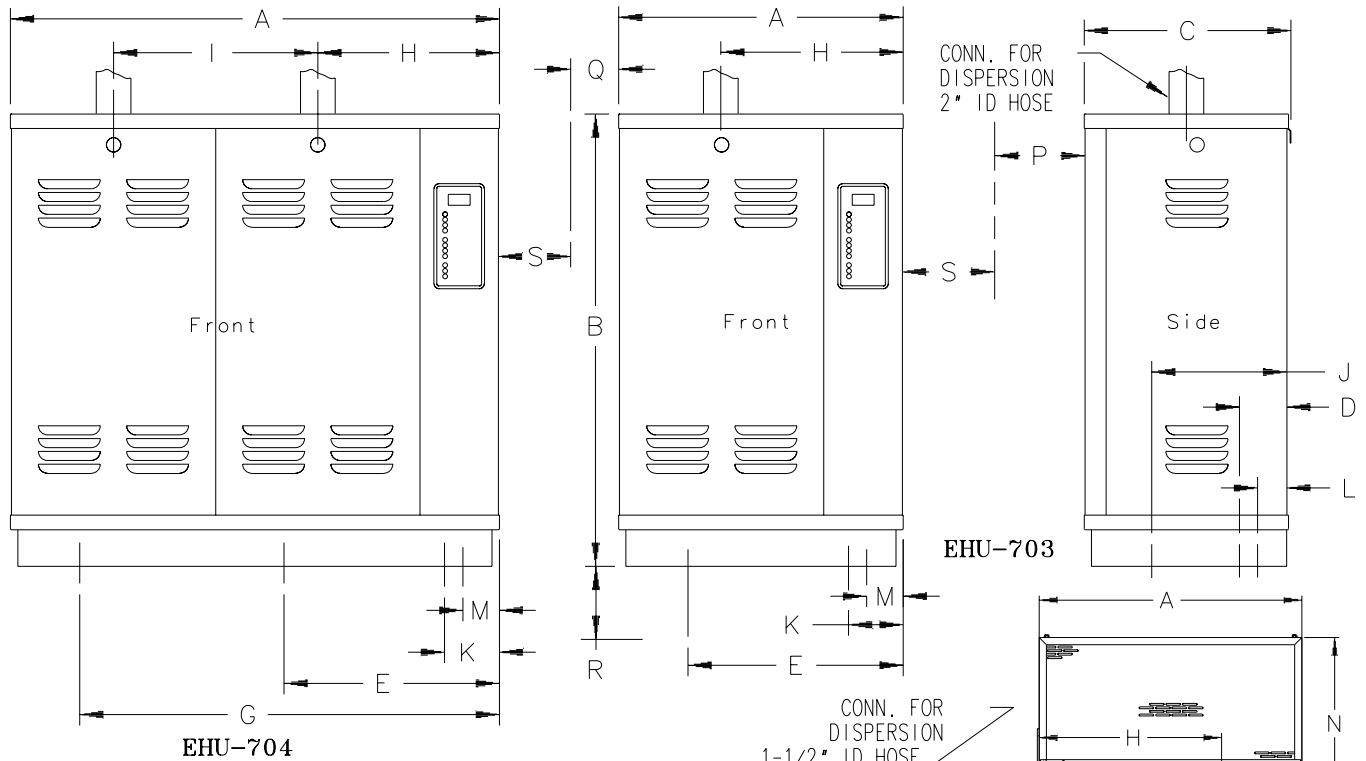
Order:

Project:

Requirements:

By:

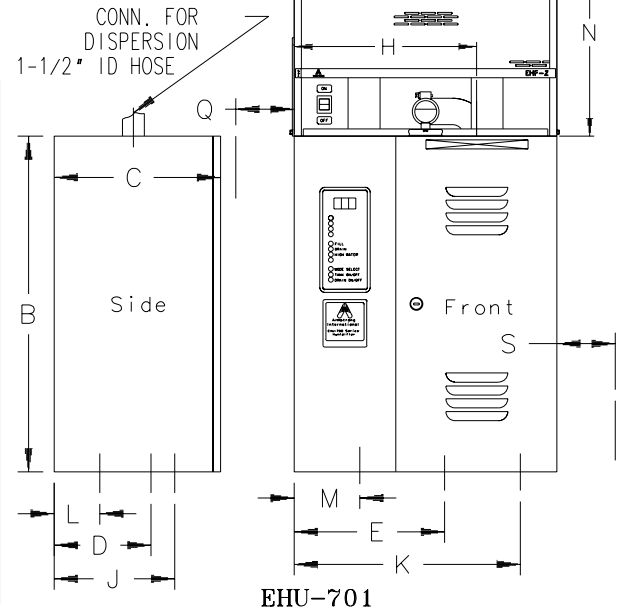
Date:



CABINET DESCRIPTION	<input type="checkbox"/> EHU-701	<input type="checkbox"/> MODEL EHU-703	<input type="checkbox"/> EHU-704
	A Width	18[457]	19-1/2[495]
B Height	23[584]	31[784]	
C Depth	11-1/2[292]	14[356]	
D Tank Drain-Side	6-5/8[168]	3-1/4[83]	
E Tank Drain-Front	10-5/16[262]	14-3/4[375]	
G Tank #2 Drain-Front	N/A	N/A	28-3/4[730]
H Steam Outlet #1	12-1/2[318]		
I Steam Outlet #2	N/A	N/A	14[356]
J Water Supply(Side)*	8-1/4[210]	9-1/4[235]	
K Water Supply(Front)*	15-1/2[394]	3-3/4[95]	
L Electric Supply- Side	3-1/8[80]	2[51]	
M Electric Supply- Front	4-1/2[114]	2-1/2[64]	
N Fan Height (EHF-2)	13[330]	N/A	
N Fan Height(EHF-3) **	16[406] (Remote Installation Only)		
P Clearance- Front	18[457]	24[610]	
Q Clearance- Left		4[102]	
R Clearance- Bottom		5[127]	
S Clearance- Right	4[102]	24[610]	

\* Water Supply Conn. 3/8" Compression.  
 Unit Is Designed To Mount On 16" Centers.  
 2 Lag Screws Are Provided For EHU-701.  
 2 Lag Screws & Bracket Are Provided For EHU-703 & 704.  
 Drain Conn. Use 1" ID Hose (Supplied)

\*\* EHF-3 Fan Can Be Directly Installed On EHU-703  
 Dimensions in inches [mm] unless otherwise noted.



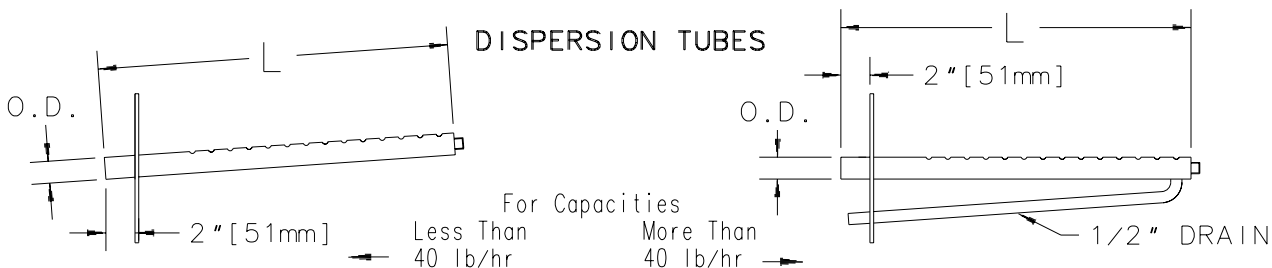

 Armstrong International, Inc.  
 Three Rivers Division  
 Three Rivers, MI 49093  
 (616) 273-1415 Fax(616) 273-9500  
 Posted on Armstrong's homepage [www.armstrong-intl.com](http://www.armstrong-intl.com)

Product	CD No.	Date
HUMIDIFIER ELECTRIC STEAM EHU-701, 703 & 704	1077	2/26/98
		Rev. A

# SERIES EHU-700 Steam Capacities & Nominal Amperage Ratings

Nominal AMP Rating	CM Module	Recommended Branch Circuits		Output lbs[kg]/hr at Voltage										
				Single Phase					Three Phase					
				Wire	Circuit Breaker	120	208	240	277	208	240	346 <sup>[1]</sup>	380	415 <sup>[2]</sup>
<b>Model EHU-701 Humidifier (1 Steam Generator)</b>														
7	7	14	15	2[.9]	4[1.8]	5[2.3]	6[2.7]	7[3]	8[3.6]	12[5.5]	13[5.9]	15[6.8]	17[7.7]	21[9.5]
12	12	14	15	4[1.8]	7[3]	8[3.6]	10[4.6]	12[5.5]	14[6.4]	21[9.5]	23[10.5]	25[11]	29[13.2]	36[16.4]
14	14	12	20	5[2.3]	8[3.6]	10[4.5]	11[5]	15[6.8]	17[7.7]	24[11]	27[12.3]	29[13.2]	34[15.5]	42[19]
16	16	12	20	6[2.7]	10[4.5]	11[5]	13[5.9]	17[7.7]	19[8.7]	28[12.7]	30[13.7]	33[15]	38[17]	-
20	20	10	25	-	12[5.5]	14[6.4]	16[7.3]	21[9.5]	24[11]	35[15]	38[17]	42[19]	-	-
24	24	10	30	-	14[6.4]	17[7.7]	19[8.7]	25[11]	29[13]	42[19]	-	-	-	-
32	32	8	40	-	19[8.6]	22[10]	26[11.8]	33[15]	38[17]	-	-	-	-	-
40	40	8	50	-	24[11]	28[13]	32[14.6]	42[19]	-	-	-	-	-	-
<b>Model EHU-703 Humidifier (1 Steam Generator)</b>														
20	20	10	25	-	12[5.5]	14[6.4]	16[7.3]	21[9.5]	24[11]	35[15.9]	38[17.3]	42[19]	48[21.8]	60[27.3]
24	24	10	30	-	14[6.4]	17[7.7]	19[8.7]	25[11.4]	29[13.2]	42[20]	46[21]	50[22.8]	58[26.4]	72[32.7]
32	32	8	40	-	19[8.6]	22[10]	26[11.8]	33[15]	38[17.3]	55[25]	61[27.8]	66[30]	77[35]	96[43.7]
40	40	8	50	-	24[11]	28[12.7]	32[14.5]	42[20]	48[21.8]	69[31.4]	76[34.5]	83[37.7]	96[43.7]	120[54.5]
48	48	6	60	-	29[13.2]	33[15]	39[17.7]	50[22.8]	58[26.4]	83[37.7]	91[41.4]	100[45]	115[52.3]	-
<b>Model EHU-704 Humidifier (2 Steam Generators)</b>														
40	20	8	50	-	24[11]	28[12.7]	32[14.5]	42[20]	48[21.8]	69[31.4]	76[34.5]	83[37.7]	96[43.7]	120[54.5]
48	24	6	60	-	29[13.2]	33[15]	39[17.7]	50[22.8]	58[26.4]	83[37.7]	91[41.4]	100[45]	115[52.3]	144[65.5]
64	32	4	80	-	39[17.7]	45[20.5]	51[23]	67[30.5]	77[35]	111[50.5]	122[55.5]	133[60.5]	154[70]	192[87.7]
80	40	3	100	-	48[21.8]	56[25.5]	64[29]	83[37.7]	96[43.7]	138[62.8]	152[69]	166[75.5]	192[87.3]	240[109]
96	48	2	125	-	58[26.4]	67[30.5]	77[35]	100[45]	115[52.3]	166[75.5]	182[82.7]	199[90.5]	230[105]	-

NOTES: <sup>[1]</sup> 346 Volt Units Require 346/200 Volt 4 Wire System.  
<sup>[2]</sup> 415 Volt Units Require 415/240 Volt 4 Wire System.  
 KW Rating = Humidity Output (lb/hr) x .345 (For Energy Calculations Only; Not For Branch Circuit Sizing.)



MATERIAL LIST	
Part Name	Material
Generator Tank	Polypropylene
Cabinet	Steel-18 Ga W/ Epoxy Enamel Coating
Electrodes EHU-701	T-430 Stainless Steel
EHU-703 & 704	Carbon Steel, Galvanized
Hose Cuffs EHU-701	EPDM (1-1/2" ID, 1-7/8" OD)
EHU-703 & 704	EPDM (2" ID, 2-3/8" OD)
Dispersion Tube	T-304 Stainless Steel

MODEL	WEIGHT	
	Operating Max lbs.[kg]	Shipping Approx. lbs.[kg]
EHU-701	80[36]	60[27]
EHU-703	113[51]	83[38]
EHU-704	158[72]	95[43]
EHF-2 Package	32[14.6]	33[15]
EHF-3 Package	33[15]	34[15.5]

SELECTING PROPER DISPERSION TUBE					
MODEL	O.D.	LENGTH (L) [cm]	DUCT WIDTH		WEIGHT lbs.[kg]
			MIN.	MAX.	
D-1	1-1/2" [38]	12" [30]	11" [28]	16" [41]	2[1]
D-1.5		18" [46]	17" [43]	22" [56]	
D-2		24" [61]	23" [58]	34" [86]	3[1.4]
D-3		36" [91]	35" [89]	46" [117]	
D-4		48" [122]	47" [119]	58" [147]	4[2]
D-5		60" [152]	59" [150]	70" [178]	
D-6		72" [183]	71" [180]	82" [208]	5[2.3]
D-7		84" [213]	83" [211]	94" [239]	
D-8		96" [244]	95" [241]	106" [269]	8[3.6]
D-9		108" [274]	107" [272]	118" [300]	
D-10	120" [305]	119" [302]	130" [330]	10[4.5]	

Options Available
On/Off Duct High Limit Stat
Modulating High Limit Stat(0-10Vdc)
Dwyer Duct Pressure Switch
10' Hose (EHU-701 Only)

Package Includes
Humidifier, Mounting Bracket & Bolts
Hose Cuffs & Clamps
0-10 Vdc Room Or Duct Humidistat

Armstrong International, Inc.  
 Three Rivers Division  
 Three Rivers, MI 49093  
 (616) 273-1415 Fax(616) 273-9500  
 Posted on Armstrong's homepage [www.armstrong-intl.com](http://www.armstrong-intl.com)

Product	CD No.	Date
HUMIDIFIER ELECTRIC STEAM EHU-701, 703 & 704	1077 (Cont'd)	2/27/98
		Rev. B