

# DIMENSIONS & DATA CERTIFIED FOR:

Representative:

Order:

Customer:

Order:

Project:

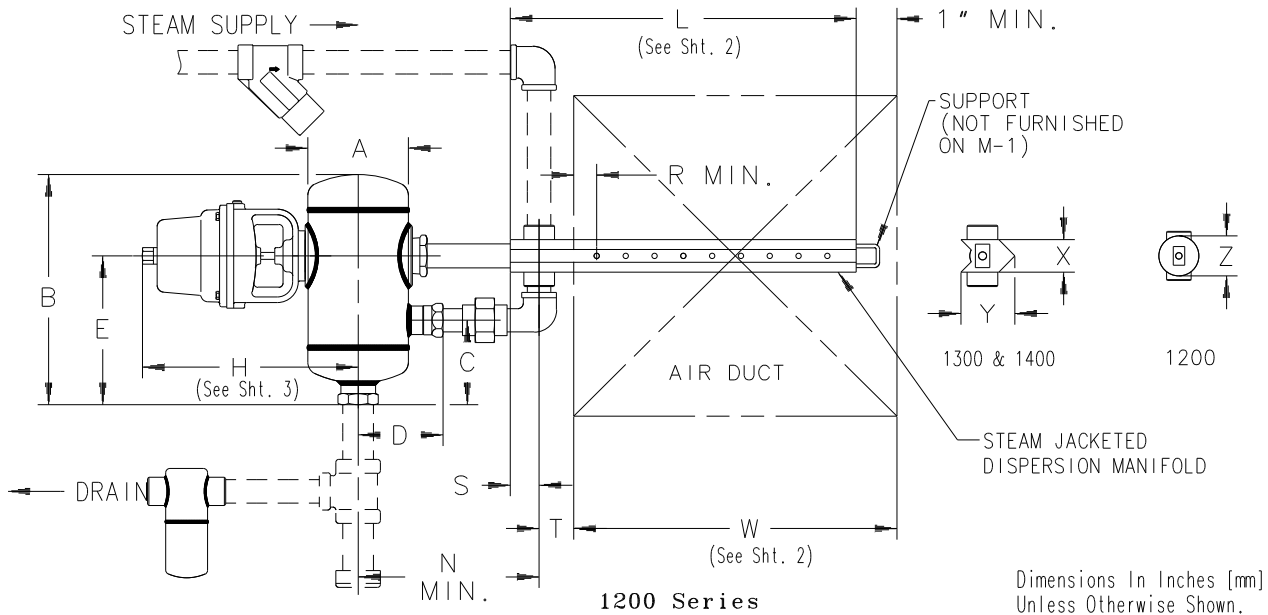
Requirements:

By:

Date:


### JOB SPECIFICATION

Capacity Required -	lb[kg]/hr
Duct Dimensions (H x W) -	
Operator Type -	
Orifice -	
Steam Pressure Supply -	psig
Manifold Size -	M-



DESCRIPTION	MODEL		
	1200	1300	1400
A Body Dia.	4-1/2[114]	6-5/8[168]	10-3/4[273]
B Body Height	10-5/16[262]	16-1/4[413]	24-1/8[613]
C Drain To C of Inlet	3-13/16[97]	6[152]	8-15/16[227]
D C of Body To Inlet	6-11/16[170]	5-9/16[141]	8-5/16[211]
E Drain To C of Outlet	8-9/16[217]	9-1/16[230]	13-1/2[343]
N C of Body To Manifold	2[51]		
R Duct To 1st Hole Of Manifold	1[25]	1-5/8[41]	
S C of Inlet To Manifold End			
T C of Manifold Inlet To Duct			
X Manifold Height	-	2-1/8[54]	3-1/4[83]
Y Manifold Width	-	3-1/8[80]	4-1/4[108]
Z Manifold Dia.	1-13/16[46]	-	-
Connection Size [DN]	Body Inlet	3/4 NPT[20]	1-1/4 NPT[32]
	Body Drain	1" NPT[25]	2 NPT[50]
	IB Trap	3/4 NPT[20]	
	Strainer Inlet	3/4 NPT[20]	1-1/4 NPT[32]
		2 NPT[50]	
Trap Model (Drain)	1811		1822
Weight, Less Opr. & Manifold lbs[kgs]	30[13]	32[14]	80[36]

MATERIAL LIST	
Part Name	Material
Steam Chamber	T304 Stainless Steel
Bonnet Ass'y	18-8 Stainless Steel
Manifold & Fittings	
Valve & Valve Seat	
Stem	ASTM A276 T316
Operator	See Specifics
Strainer	ASTM 351 CF8M T316
IB Steam Trap	T304 Stainless Steel



Armstrong International, Inc.  
Three Rivers Division  
Three Rivers, MI 49093  
(269) 273-1415 Fax(269) 273-9500  
Posted on Armstrong's homepage [www.armstrong-intl.com](http://www.armstrong-intl.com)


Product	CD No.	Date
STEAM HUMIDIFIER, STAINLESS STEEL 1200, 1300 & 1400	1080	10/25/06
		Rev. E

SERIES 1000 Steam Capacities Ratings (Output lbs[kg]/hr)

Orifice Size	Steam Press. (psig[bar])															MODEL
	2[.13]	4[.28]	6[.41]	8[.55]	10[.69]	12[.83]	15[1]	20[1.4]	25[1.7]	30[2.1]	35[2.4]	40[2.8]	50[3.4]	60[4.1]		
1/8"	5[2.3]	8[3.6]	10[4.5]	12[5.5]	15[6.8]	17[7.7]	20[9.1]	23[10]	25[11]	28[13]	31[14]	33[15]	50[38]	60[44]	1200 Humidifier	
5/32"	8[3.6]	12[5.5]	16[7.3]	19[8.6]	21[9.5]	23[11]	27[12]	31[14]	36[16]	40[18]	44[20]	48[22]	56[26]	65[30]		
3/16"	12[5.5]	18[8.2]	23[11]	27[12]	31[14]	35[16]	40[18]	47[21]	52[24]	59[27]	65[30]	70[32]	83[38]	93[42]		
7/32"	16[7.3]	25[11]	32[15]	37[17]	42[19]	47[21]	53[24]	62[28]	70[32]	64[29]	90[41]	98[45]	113[51]	135[61]		
1/4"	22[10]	33[15]	42[19]	49[22]	55[25]	62[28]	69[31]	82[37]	91[41]	102[46]	115[52]	125[57]	150[68]	170[77]		
9/32"	27[12]	42[19]	53[24]	63[29]	71[32]	79[36]	88[40]	103[47]	117[53]	129[59]	140[64]	159[72]	190[86]	213[97]		
5/16"	33[15]	51[23]	65[30]	77[35]	87[40]	97[44]	108[49]	127[58]	144[65]	159[72]	172[78]	197[90]	228[104]	261[119]		
11/32"	40[18]	62[28]	78[36]	91[41]	102[46]	114[52]	129[59]	152[69]	172[78]	192[87]	206[94]	236[107]	270[123]	313[142]		
3/8"	53[24]	65[30]	84[38]	99[45]	115[52]	123[56]	138[63]	162[74]	183[83]	205[93]	226[103]	246[112]	290[132]	334[152]		
7/16"	74[34]	90[41]	108[49]	123[56]	136[62]	150[68]	170[77]	197[90]	224[102]	250[114]	277[126]	316[144]	370[168]	423[192]		
1/2"	88[40]	100[45]	112[51]	133[60]	150[68]	166[75]	194[88]	230[105]	268[122]	300[136]	334[152]	367[167]	428[195]	486[221]		
13/32"	70[32]	100[45]	121[55]	139[63]	153[70]	169[77]	185[84]	212[96]	246[112]	270[123]	297[135]	330[150]	384[175]	441[200]	1300 Humidifier	
7/16"	77[35]	108[49]	129[59]	146[66]	169[77]	189[86]	213[97]	246[112]	286[130]	312[142]	336[153]	363[165]	432[196]	497[226]		
15/32"	83[38]	130[59]	150[68]	167[76]	193[88]	211[96]	238[108]	282[128]	319[145]	356[162]	385[175]	416[189]	480[218]	546[248]		
1/2"	99[45]	145[66]	172[78]	198[90]	217[99]	242[110]	272[124]	321[146]	364[165]	407[185]	435[198]	460[209]	540[245]	621[282]		
9/16"	103[47]	159[72]	196[89]	225[102]	258[117]	271[123]	310[141]	360[164]	408[185]	456[207]	515[234]	562[255]	661[300]	753[342]		
5/8"	117[53]	175[80]	213[97]	252[115]	289[131]	317[144]	369[168]	428[195]	488[222]	547[249]	607[276]	664[302]	785[357]	900[409]		
3/4"	127[58]	203[92]	255[116]	300[136]	361[164]	382[174]	459[209]	548[249]	637[290]	745[339]	848[385]	924[420]	1082[492]	1270[577]		
5/8"	137[62]	190[86]	225[102]	266[121]	312[142]	350[159]	414[188]	478[217]	541[246]	606[275]	-	-	-	-	1400 Humidifier	
3/4"	185[84]	258[117]	309[140]	361[164]	425[193]	474[215]	556[253]	684[311]	772[351]	859[390]	-	-	-	-		
7/8"	243[110]	338[154]	405[184]	473[215]	553[251]	621[282]	758[345]	873[397]	996[453]	1109[504]	-	-	-	-		
1"	278[126]	390[177]	468[213]	546[248]	639[290]	718[326]	850[386]	991[450]	1134[515]	1268[576]	-	-	-	-		
1-1/8"	320[145]	450[205]	540[245]	630[286]	748[340]	828[376]	931[423]	1117[508]	1304[593]	1469[668]	-	-	-	-		
1-1/4"	344[156]	475[216]	570[259]	665[302]	795[361]	874[397]	988[449]	1182[537]	1391[632]	1567[712]	-	-	-	-		
1-1/2"	390[177]	558[254]	669[304]	781[335]	919[418]	1026[466]	1153[524]	1396[635]	1607[730]	1816[825]	-	-	-	-		

Manifold Lengths, Duct Widths & Weights

MODEL	M-1	M-1.5	M-2	M-3	M-4	M-5	M-6	M-7	M-8	M-9	M-10	M-11	M-12	
L (Length) [cm]	12[30]	18[46]	24[61]	36[91]	48[122]	60[152]	72[183]	84[213]	96[244]	108[274]	120[305]	132[335]	144[366]	
W (Duct Width) [cm]	Min.	8[20]	15[38]	21[53]	31[79]	43[109]	53[135]	65[165]	77[196]	89[226]	101[257]	113[287]	125[318]	137[348]
	Max	14[36]	20[51]	30[76]	42[107]	52[132]	64[163]	76[193]	88[224]	100[254]	112[284]	124[315]	136[345]	148[376]
Shipping Wt-lbs [kgs]	1200	4[1.8]	5[2.3]	6[2.7]	9[4.1]	11[5]	13[6]	16[7]	18[8]	21[9.5]	22[10]	25[11.4]	28[13]	30[14]
	1300	6[2.7]	8[3.6]	10[4.5]	13[5.9]	17[7.7]	21[9.5]	24[11]	29[13]	32[14.5]	37[17]	41[19]	43[20]	46[21]
	1400	Consult Factory				24[11]	30[14]	34[15]	40[18]	45[20]	45[20]	55[25]	60[27]	64[29]



Armstrong International, Inc.  
 Three Rivers Division  
 Three Rivers, MI 49093  
**Armstrong** (269) 273-1415 Fax (269) 273-9500  
 Posted on Armstrong's homepage [www.armstrong-intl.com](http://www.armstrong-intl.com)

Product	CD No.	Date
STEAM HUMIDIFIER, STAINLESS STEEL 1200, 1300 & 1400	1080 (Sht. 2)	06/21/00
		Rev. C

Mode Of Control	Pneumatic Modulating		Electric Modulating			Electric On/Off	
	Armstrong C1801	Honeywell MP953D	Honeywell M9182A	BELIMO AF24-SR	BELIMO NUF24	ASCO	
H	1200	9-9/16[243]	8-3/16[208]	13-3/16[335]	16-1/4[413]	14-3/4[374]	4-9/16[116]
	1300	10-3/4[273]	9-1/4[235]	14-1/4[362]	17-5/16[440]	15-13/16[401]	5-5/8[143]
	1400	-	11-5/16[287]	16-5/16[414]	19-3/8[492]	-	-
Weight Of Operator	7-3/4[3.5]	6[2.7]	12[5.4]	13[5.9]	4.3[1.9]	3/4[.3]	

PACKAGE INCLUDES	
Humidifier	
Distribution Manifold	
"Y" Strainer	
IB Trap	
Operator	AM (Pneumatic) or EM (Electric)

OPTION LIST :		
Humidistat, Pneumatic	Wall Duct Duct (High Limit)	<input type="checkbox"/> <input type="checkbox"/> <input type="checkbox"/>
Humidistat, Electric	Wall Duct (High Limit)	<input type="checkbox"/> <input type="checkbox"/>
Switch, Temperature	Pneumatic Electric	<input type="checkbox"/> <input type="checkbox"/>
Operator, Pneumatic	Armstrong C1801 (AM) Honeywell MP953D (HAM) Honeywell MP953F (HAM) w/ Pilot Positioner	<input type="checkbox"/> <input type="checkbox"/> <input type="checkbox"/>
	Operator, Electric	Honeywell M9182A (HEM) 4-20 ma (Conversion Board Available) Belimo AF24-SR Belimo NUF24
Manifold, Insulated		<input type="checkbox"/>

Operator Spring Ranges			
Armstrong C1801		Honeywell MP953D	
Range, Operating	Start Points, Adjustable	Range, Operating	Start Points, Non-Adjustable
5 lbs. [2.3 kgs]	3 psig [.2 bar] Minimum	4 lbs. [1.8 kgs]	3 psig [.2 bar]
10 lbs. * [4.5 kgs]		5 lbs. [2.3 kgs]	8 psig [.54 bar]
-	-	7 lbs.* [3.2 kgs]	4 psig [.27 bar]

\* Standard spring furnished when no spring range is specified.

NOTE:  
Complete Identification Includes;  
Operator Type (AM, HAM Or HEM)  
Model No. (1200, 1300 Or 1400) And  
Manifold Length (Example; AM-1200-M4)

 <b>Armstrong</b> <a href="http://www.armstronginternational.com">www.armstronginternational.com</a>	Product	ENGLISH	CD No.	Date
	STEAM HUMIDIFIER, STAINLESS STEEL 1200, 1300 & 1400	WEB	1080	7/17/07
		Y N		
	✓	Rev; D	Sht. 3	By; paulg