



A division of CIRCOR International, Inc.

# Application Guide

**SPENCE ENGINEERING COMPANY, INC.** 150 GOLDENHAM ROAD, WALDEN, NY 12586-2035

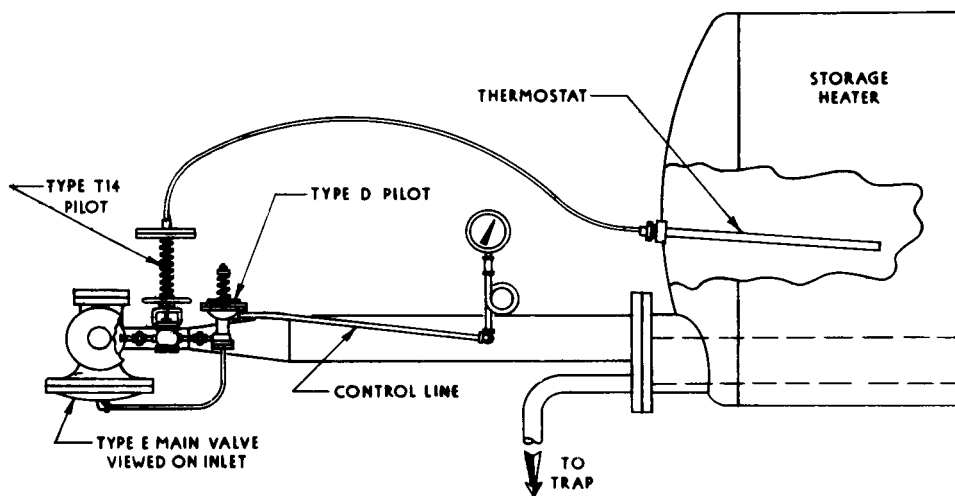
## TYPE ET14 & ET14D TEMPERATURE REGULATOR

### APPLICATION:

To provide temperature control in a storage water heater.

### OPERATION:

Steam flowing through the main valve is controlled by the T14 pilot. Variations in temperature at the thermostat opens and closes T14 pilot, which operates the valve. If pressure control is needed to protect heater coils, the D pilot is used.



### ADVANTAGES:

- Pilot operated accuracy.
- No separate PRV required.
- Many temperature ranges available.
- All packless construction.

ET14/ET14D FOR  
STORAGE HEATER

APPLICATION GUIDE  
TEMPERATURE