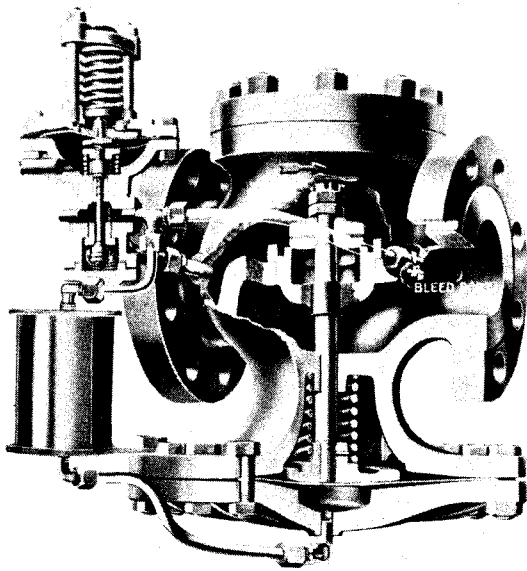




SPENCE ENGINEERING COMPANY, INC.
Walden, NY 12586-2012

TYPE ED AND ED2 PRESSURE REGULATOR FOR SERVICE TO 600 PSIG (750°F.)



Type ED Pressure Regulator

Project Ref:

Customer:

Valve Ref:

The SPENCE Type ED and ED2 Pressure Regulators are designed to reduce a steady or varying initial pressure to a constant delivery pressure. The Cast Steel Valves are especially constructed for superheated steam service up to a temperature of 750°F., as shown below.

Delivery pressure ranges, determined by a choice of Pilot and Control Spring, are as follows:

Type ED	3 to 20 psi	<input type="checkbox"/>
	5 to 50 psi	<input type="checkbox"/>
	10 to 100 psi	<input type="checkbox"/>
	20 to 150 psi	<input type="checkbox"/>
Type ED2	100 to 300 psi	<input type="checkbox"/>

Main Valve and Pilot Bodies are suitable for maximum inlet conditions as follows:

	Below 600°F	600 to 750°F
Screwed Ends	<input type="checkbox"/> 300 psi	<input type="checkbox"/> 300 psi
Flanged ANSI 150	<input type="checkbox"/> 150 psi	
Flanged ANSI 300	<input type="checkbox"/> 300 psi	<input type="checkbox"/> 300 psi
Flanged ANSI 400	<input type="checkbox"/> 400 psi	<input type="checkbox"/> 400 psi
Flanged ANSI 600	<input type="checkbox"/> 600 psi	<input type="checkbox"/> 600 psi

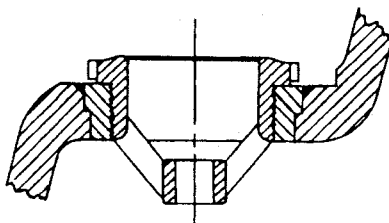
Other Materials:

Seats and Discs	<input type="checkbox"/> SECO Metal	<input type="checkbox"/> SECO Metal
Stems	<input type="checkbox"/> Stainless Steel	<input type="checkbox"/> Hardened SS
Diaphragms	<input type="checkbox"/> Stainless Steel	<input type="checkbox"/> Stainless Steel
Springs	<input type="checkbox"/> Tempered Steel*	<input type="checkbox"/> A-286 Alloy Stl

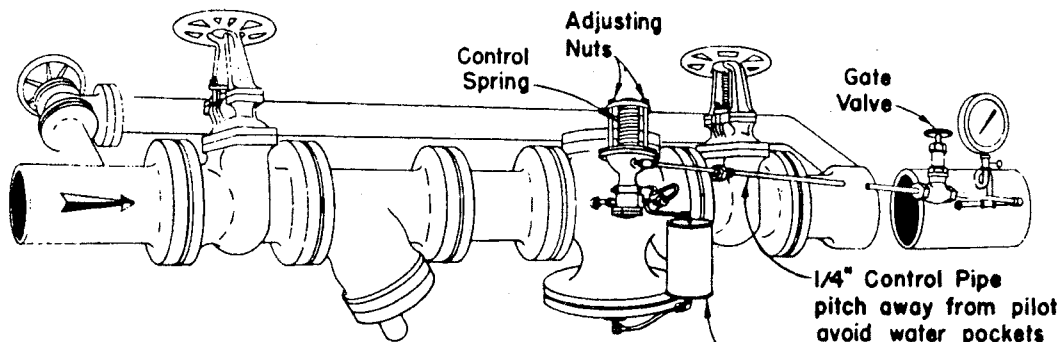
* A-286 for pressures 400 psi and higher.

Main Valve Accessories

- ☐ Condensation Chamber - regularly furnished for steam temperatures above 600°F.
- ☐ SECOWELD Seat Construction - regularly furnished for pressures 400 psi or higher.
- ☐ Parabolic Disc - Furnished on special order.
- ☐ Stellite Seats and Discs - furnished on special order.



A patented high pressure valve seat construction which prevents steam from cutting away the valve body if a leak develops at the threaded seat ring joint. A SECO Metal bushing is seal welded into the body and threaded to take a renewable seat ring of the same material. As SECO Metal resists wiredrawing, if a slight leak should occur, no damage can be done to the body or seat ring.



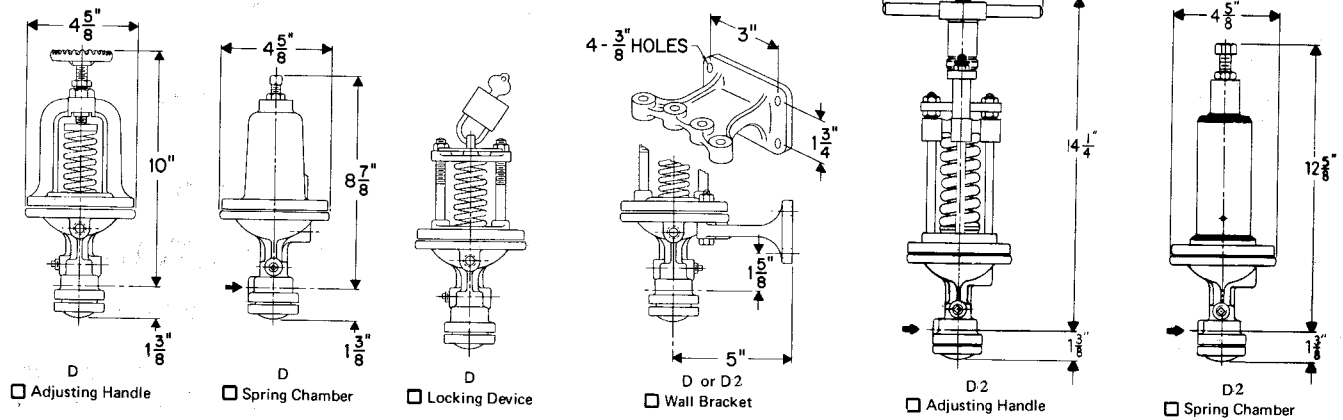
Typical installation of the Type ED
or ED2 Pressure Regulator

SUB3-4B/9006

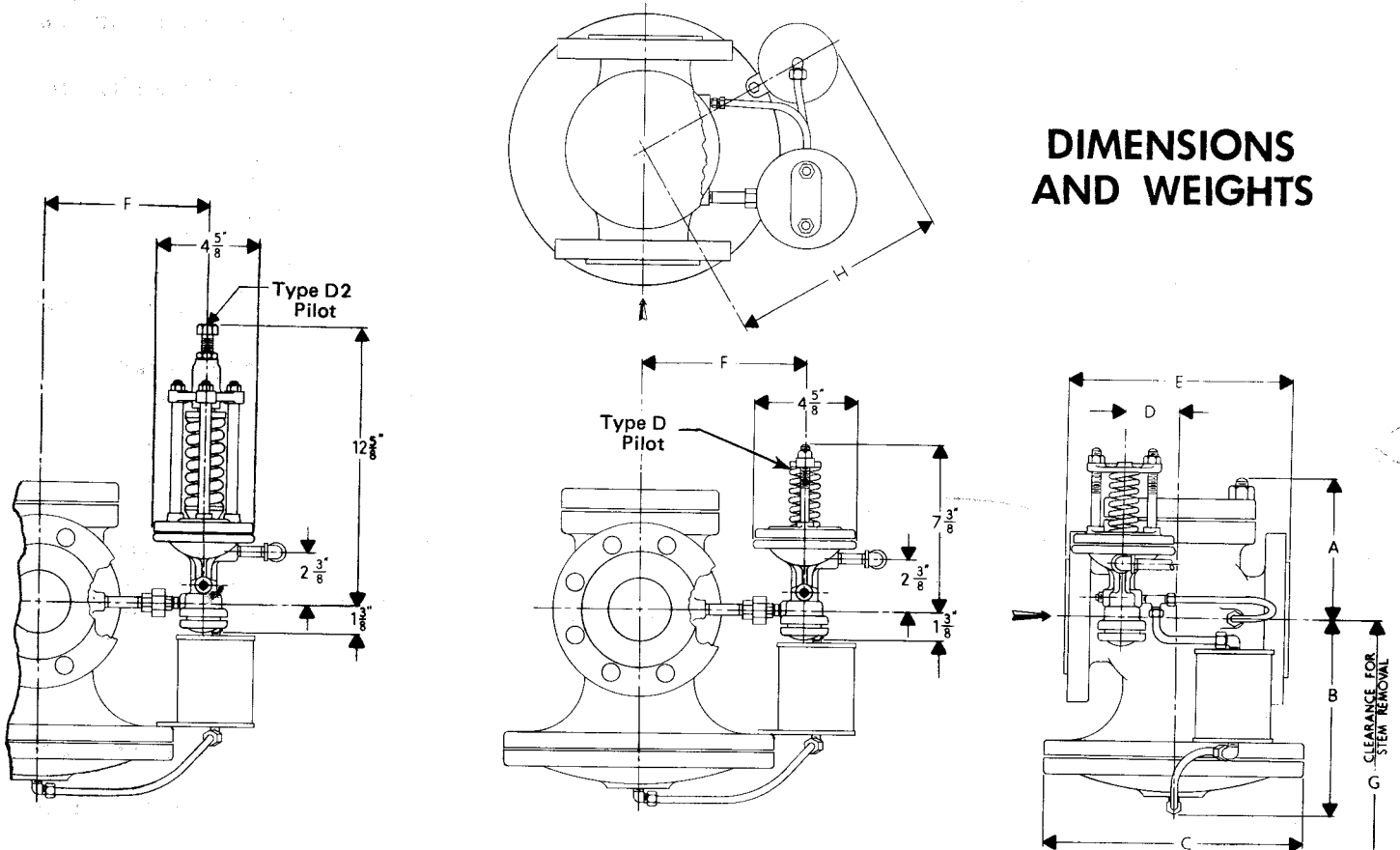
Condensation Chamber required
for steam temperature above 600°F

PRINTED IN USA

Pilot Modifications



DIMENSIONS AND WEIGHTS



Valve is tapped so that Pilot may be mounted on either side.

SIZE Inches	DIMENSIONS, INCHES														*Approx. Shipping Wt. Lb.				
	E-FACE TO FACE, IN.					A		B	C	D	F	G	H						
	STEEL					Ser. Ends 150 300 lb	400 600 lb												
	Ser. Ends	150 lb	300 lb	400 lb	600 lb														
3/8	4-3/8					2-3/4		5-1/4	5-7/8	1-1/4	5-3/8	7-3/8	5-7/8	14					
1/2	4-3/8					2-3/4	2-3/4	5-1/4	5-7/8	1-1/4	5-3/8	7-3/8	5-7/8	14				20	
3/4	4-3/4					6-3/8	2-7/8	3-7/8	5-1/2	6-1/2	1-3/8	5-5/8	7-7/8	6-1/4	18			28	
1	5-3/8	5-1/2	6-1/2			6-1/2	3-5/8	4-1/4	6-1/4	7	1-1/2	5-3/4	8-7/8	6-1/2	23	26	31	32	
1-1/4	6-1/2	6-3/4	7-7/8			7-7/8	4-1/8	4-5/8	6-1/2	7-7/8	1-7/8	6	9-1/8	7	33	37	41	45	
1-1/2	7-1/4	6-7/8	8			8	4-3/8	5-1/8	7-1/8	8-3/4	2	6-1/4	9-3/4	7-3/8	43	47	55	58	
2	7-1/2	8-1/2	10-1/4			10-1/4	5-1/4	5-3/4	7-5/8	9-7/8	2-1/8	6-5/8	11-1/4	7-7/8	62	73	78	83	
2-1/2		9-3/8	11-1/4			11-1/4	5-3/4	7-7/8	8-3/8	10-7/8	2-3/8	6-3/4	12-1/8	8-1/4		95	100	130	
3		10	12-1/4			12-1/4	6-5/8	9-1/8	9-1/4	11-3/4	2-3/4	7-1/4	14-5/8	9-3/4		125	140	175	
3-1/2		10-3/4	12-3/8			12-3/8	6-7/8	9-5/8	10	12-3/4	3-1/4	7-1/2	15-3/4	11-3/4		150	165	195	
4		11-7/8	12-1/2	13-1/2	14-1/2	7-5/8	10-5/8	11-7/8	14-3/4	3-1/2	8	18-1/4	12-3/4			210	230	290	310
5		13-5/8	14-1/2	15-3/4	16-1/2	8-1/2	12-1/2	12-1/2	16-7/8	3-1/2	9	20-1/8	13-7/8			295	310	435	490
6		15-1/8	16	16-7/8	17-3/8	10	13-3/4	14-1/8	19-3/4	4	9-7/8	22-3/8	15-1/8			420	470	605	655
8		19	20	21	21-5/8	11-1/2	15-3/8	17-1/4	22-1/2	6-1/4	10-1/2	27-3/4	16-1/2			700	710	955	1070
10		23-5/8	25			13-3/4		23-3/8	28	6	12-1/2	36-1/4	23-7/8			1240	1300		
12		26-1/2	28			15-7/8		25-1/4	33	8-1/2	14	41-1/2	26-3/8			2060	2140		

*For D Pilot and Fittings add 8 lb.
For D2 Pilot and Fittings add 11 lb.