

DIMENSIONS & DATA CERTIFIED FOR:

Representative:

Order:

Customer:

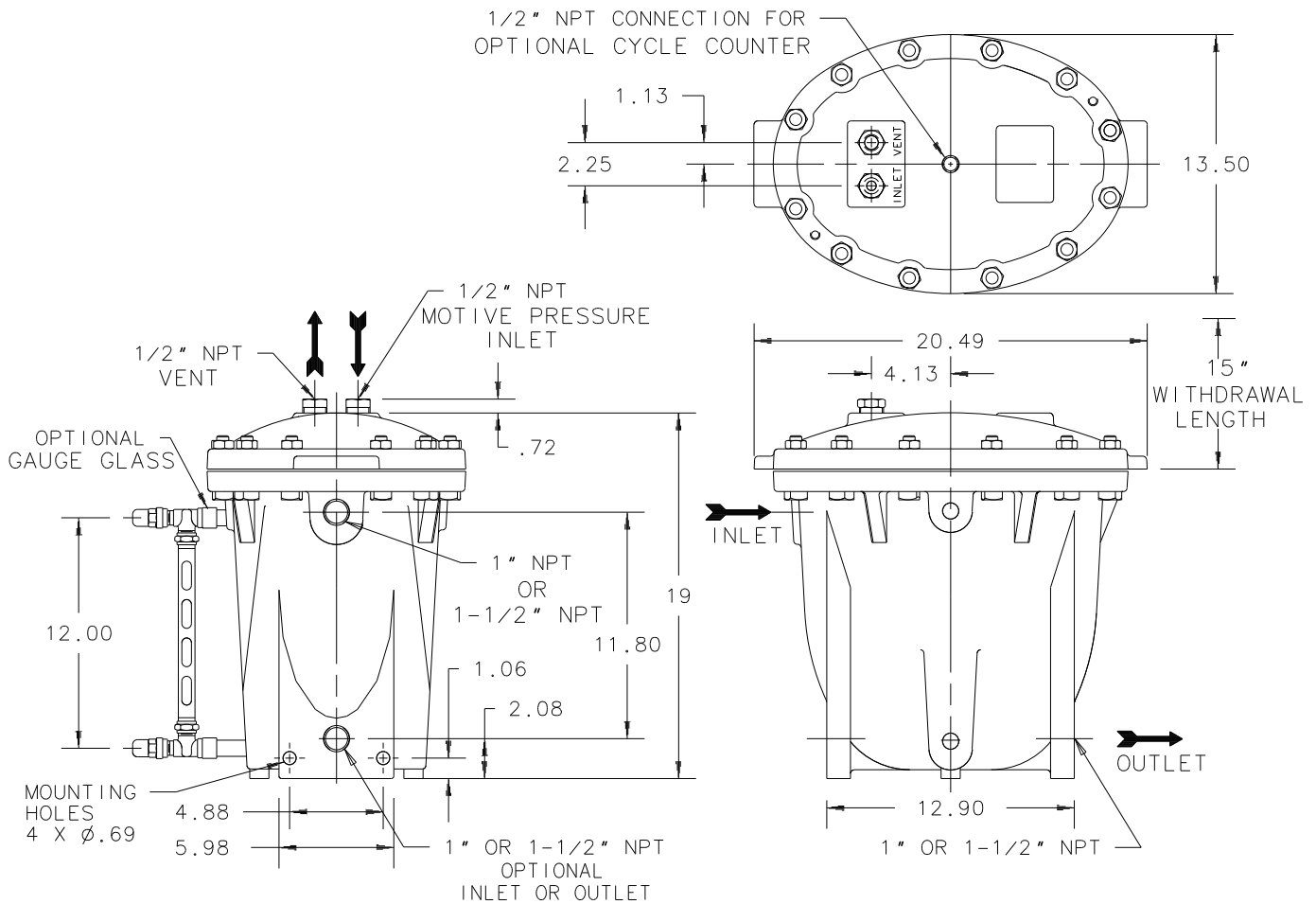
Order:

Project:

Requirements:

By:

Date:




Armstrong Condensate Management Group Three Rivers, MI. 49093 Telephone (269) 279-3601 Fax (269) 279-3150		
Armstrong Posted on www.armstronginternational.com		
Product	CDF No.	Date
PUMPING TRAP PT-204 & PT-206	CDF 1000	12/06/06
		Rev. C

(OVER)

LIST OF MATERIALS	
NAME OF PART	MATERIAL
Body and Cap	Cast Iron ASTM A48 Class 30
Cap Gasket	Compressed Non-Asbestos
Bolts	ASTM A193 Grade B-7
Nuts	ASTM A194 Grade 2H
Inlet Valve Assembly	Stainless Steel
Vent Valve Assembly	Stainless Steel
Valve Assembly Washers	Zinc Plated Steel
Plug	Cast Iron
Mechanism Assembly (including float and springs)	Stainless Steel
Inlet Check Valve	Bronze ASTM B62
Outlet Check Valve	Bronze ASTM B62

OPTIONS
<p>1. Check valves should be ordered as an option with the Pumping Trap. Inlet check valve is 1" NPT (1-1/2" NPT for PT-206) bronze swing check valve with teflon disc, Class 150 (minimum). Body material per ASTM B62. Outlet check valve is 1" NPT (1-1/2" NPT for PT-206) bronze lift check valve, Class 150 (minimum). Body material per ASTM B62.</p> <p>2. Armored gauge glass. Maximum allowable pressure 250 psig at 425°F. This exceeds Pumping Trap design of 150 psig at 425°F.</p> <p>3. Cycle counter.</p> <p>4. Insulation jacket.</p>

INSTALLATION NOTES
<p>1. The appropriate size and style check valves must be installed on the supply and discharge sides of the Pumping Trap for it to operate.</p> <p>2. A minimum 6" vertical filling head is recommended from the equipment drain point to the top of the pump cap.</p> <p>3. Liquid flowing from the equipment being drained must be stored during the pump's discharge cycle. A liquid reservoir or vented receiver should be installed in a horizontal plane to prevent flooding of equipment.</p>

 Armstrong Fluid Handling, Inc. Three Rivers, MI. 49093 Telephone (269) 278-6500 Fax (269) 279-3150 Posted on Armstrong's homepage www.armstrong-intl.com		
Product	CDF No.	Date
PUMP TRAP PT-204 & PT-206	CDF 1000	11/07/96
		Rev. B