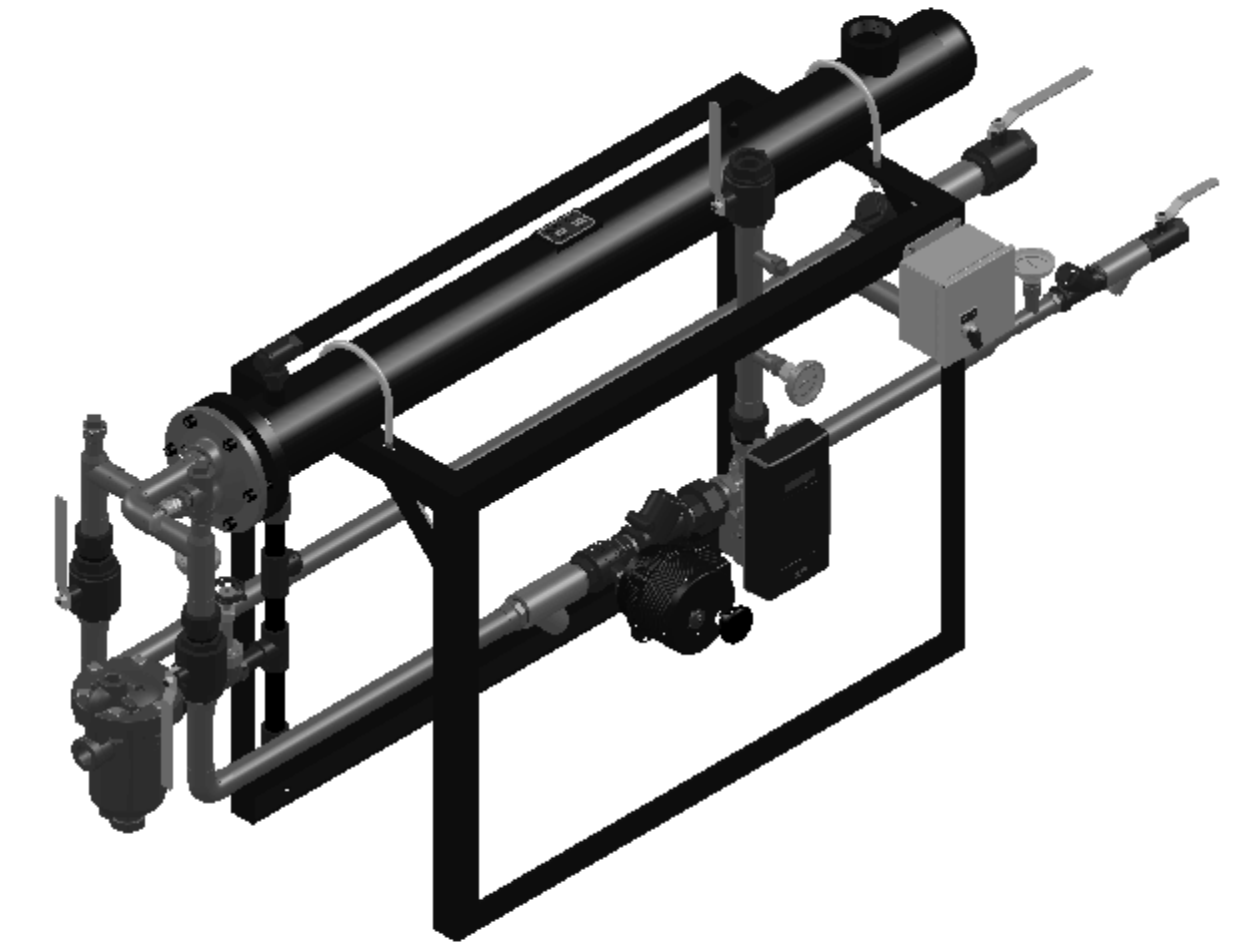


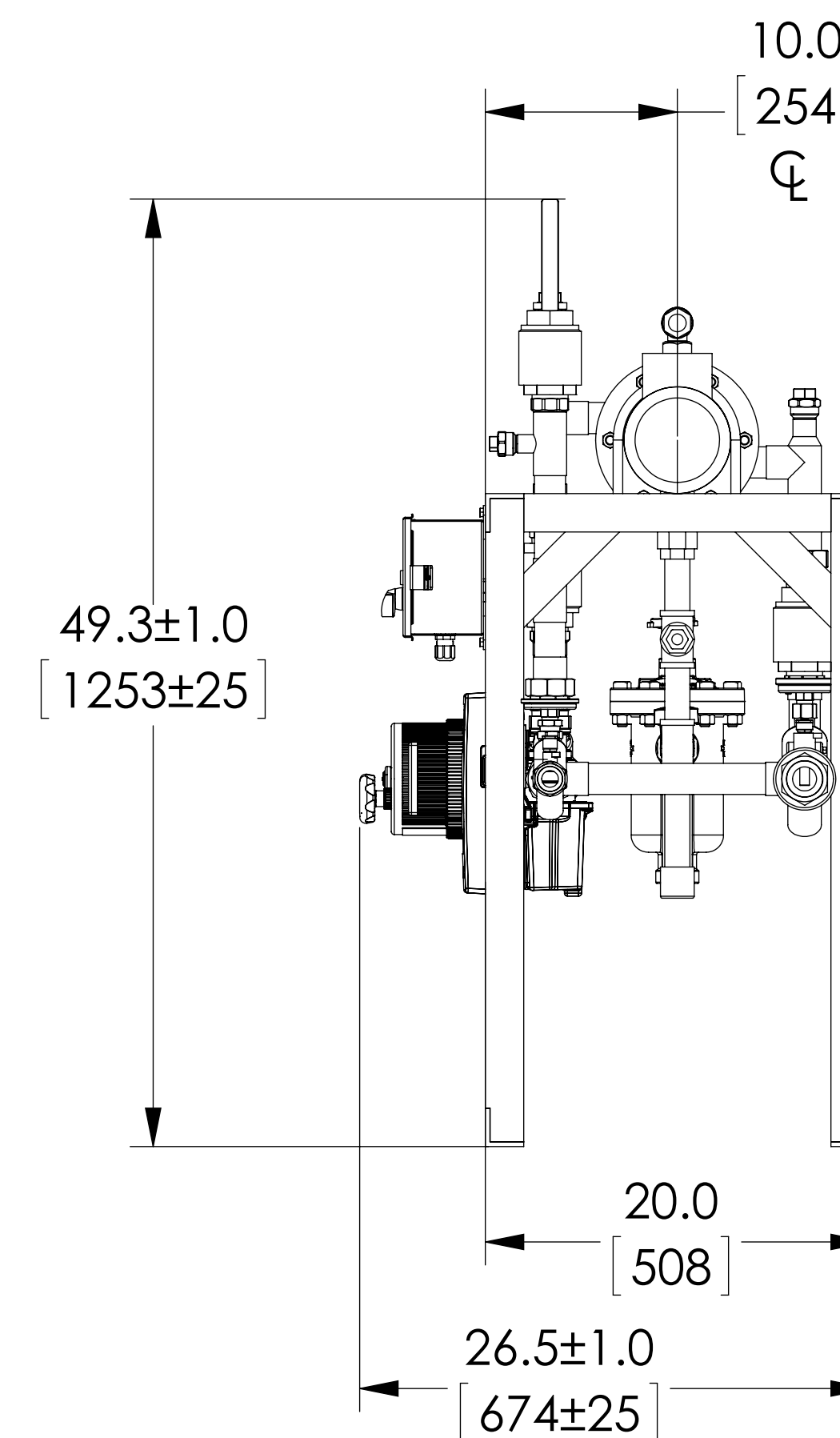
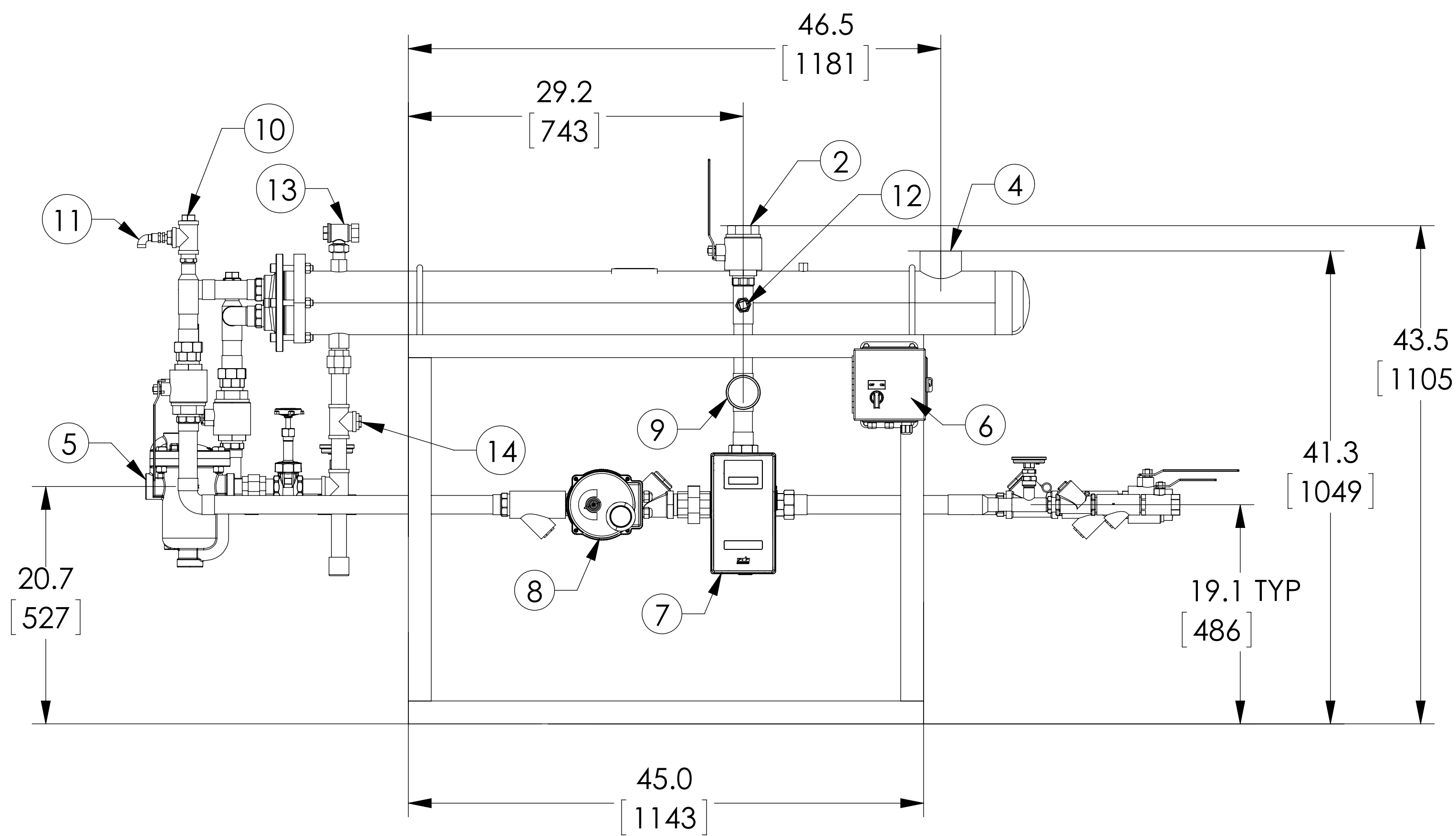
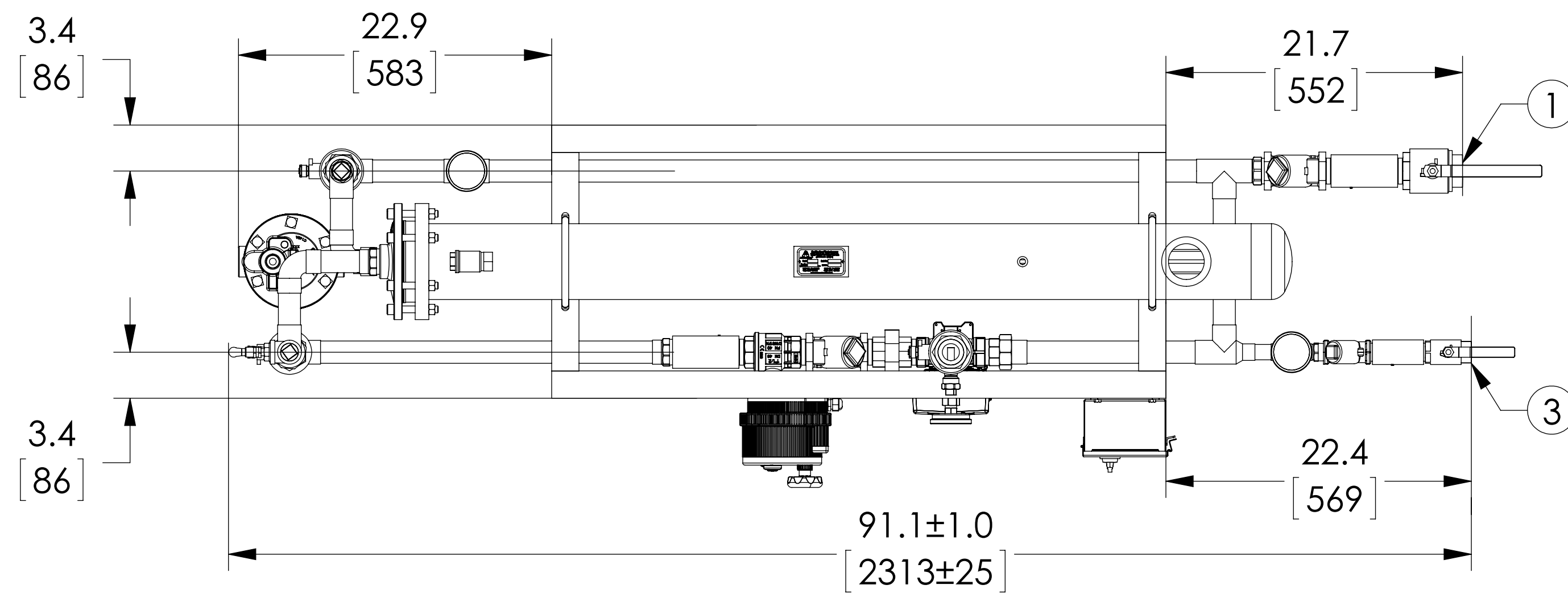
# APPROVAL

BY: \_\_\_\_\_ DATE: \_\_\_\_\_

- APPROVED, PROCEED WITH FABRICATION
- APPROVED AS NOTED, PROCEED WITH FABRICATION IN ACCORDANCE WITH COMMENTS
- DISAPPROVED, DO NOT FABRICATE



DIGITAL FLO STEAM/WATER SHELL & TUBE HEAT EXCHANGER SINGLE WALL



PROJECT NAME :

TAG :

| ITEM | DESCRIPTION                              | CONNECTION      |
|------|------------------------------------------|-----------------|
| 1    | COLD WATER INLET                         | 1-1/2" NPT      |
| 2    | MIXED WATER OUTLET                       | 1-1/2" NPT      |
| 3    | RECIRC WATER INLET                       | 1" NPT          |
| 4    | STEAM INLET                              | 2-1/2" NPT      |
| 5    | CONDENSATE OUTLET                        | 1" NPT 813 IB   |
| 6    | ELECTRICAL PANEL                         | 110VAC @ 0.7A   |
| 7    | DRV40                                    | 1-1/2" NPT      |
| 8    | N.C. ACTUATED BALL VALVE SAFETY SHUT OFF | 1-1/2" NPT      |
| 9    | THERMOMETER (3)                          |                 |
| 10   | CIP CONNECTION (2)                       | 1" NPT          |
| 11   | SRV(PRESSURE) PIPE TO DRAIN              | 1" NPT          |
| 12   | SRV(CONNECTION FOR USER SUPPLIED T&P)    | 3/4" NPT        |
| 13   | AIR VENT                                 | 3/4" NPT        |
| 14   | VACUUM BREAKER                           | 1/2" NPT        |
|      |                                          |                 |
| ITEM |                                          | MATERIAL        |
|      | PIPING                                   | COPPER TYPE "L" |
|      | EXCHANGER SHELL MATL.                    | CARBON STEEL    |
|      | EXCHANGER TUBE MATL.                     | ADMIRALTY BRASS |
|      |                                          |                 |
|      | DRV SET POINT                            | 85°F            |

NOTE(S):

- ALL DIMENSIONS +/- 0.5[13] UNLESS OTHERWISE SHOWN.
- COMPLETE ASSEMBLY LEAD FREE COMPLIANT - THE WETTED SURFACE OF THIS PRODUCT CONTACTED BY CONSUMABLE WATER CONTAINS LESS THAN ONE QUARTER OF ONE PERCENT (0.25%) OF LEAD BY WEIGHT.
- PACKAGE INCLUDES ALL REQUIRED INLET CHECK VALVES AND STRAINERS ON DOMESTIC SIDE.
- DRV, SAFETY SHUT OFF AND ELECTRICAL PANEL ARE PREWIRED TO PROVIDE A SINGLE ELECTRICAL LANDING POINT AT THE PANEL.
- ITEM #11 IS 1/4[6.4] PIPE TO DRAIN IF FACTORY PRESS RELIEF VALVE IS USED.

|                                                               |        |
|---------------------------------------------------------------|--------|
| DO NOT SCALE DRAWING<br>TOLERANCES UNLESS OTHERWISE SPECIFIED |        |
| DIMENSIONING<br>ENGLISH [mm]                                  |        |
| FRACTIONAL ± 1/64                                             | IN. MM |
| ANGULAR: ± 2                                                  |        |
| DECIMAL .XXXX ± .0005                                         | ----   |
| .XXX ± .005                                                   | .010   |
| .XX ± .015                                                    | .10    |
| .X                                                            | .3     |

|                   |            |
|-------------------|------------|
|                   |            |
| NAME              | DATE       |
| DRAWN<br>CFG      | 11/18/2013 |
| RELEASED<br>SALES |            |

|                                                                                  |              |
|----------------------------------------------------------------------------------|--------------|
| <b>ARMSTRONG INTERNATIONAL</b><br>Copyright © 2010 ARMSTRONG INTERNATIONAL, INC. |              |
| <b>DF53540 1-1/2 NPT 1-1/2 NPT 1 NPT<br/>CPR</b>                                 |              |
| CONFIG# (C-118778)                                                               |              |
| MATERIAL                                                                         | SHEET 1 OF 1 |
| REV                                                                              | DWG. D589701 |