



Water Temperature Control - Recirculation Systems

Digital

The Brain® Model DMC50BS

DMC50BS is a fully Digital Mixing Center (DMC), with BrainScan® - hot water monitoring control module, designed specifically to be the primary water temperature controller in a continuously pumped circulating hot water system.

Digital technology provides enhanced water temperature control accuracy which resists zero system demand “Temperature Creep” without the use of a manual throttling valve or a temperature activated pump shut-off device (aquastat).

Operational Specifications (DRV50)

- +/-2°F water temperature control at points of use 25' downstream during demand
- +/-2°F water temperature control at the DRV during zero system demand “idling” periods
- 2°F minimum valve inlet to outlet temperature requirement (system recirculation temperature loss)
- Automatic shutoff of hot water flow upon cold water inlet supply failure
- Automatic shutoff of hot water flow in the event of a power failure
- Programmable set point range of 81-158°F (27-70°C)
- Programmable thermal disinfection mode
- Programmable 1st level hi/lo temp alarm display
- Programmable temperature error level for safety shutdown

Technical Specifications (DRV50)

- 100-240 V AC
- Polymer Electronics Enclosure
- Stainless Steel Valve Construction
- Complete Assembly Lead Free Compliant
- Maximum inlet HW supply temperature 185°F (85°C)
- Minimum Circulation Flow – 10 GPM/38 LPM
- Minimum System Draw Off - 0
- ASSE 1017, CSA B125 and CE Certified
- Operational water pressure of 10-150 psig
- Display in °C or °F
- Shipping weight 560 lbs (255 kg)

Connectivity (DRV50)

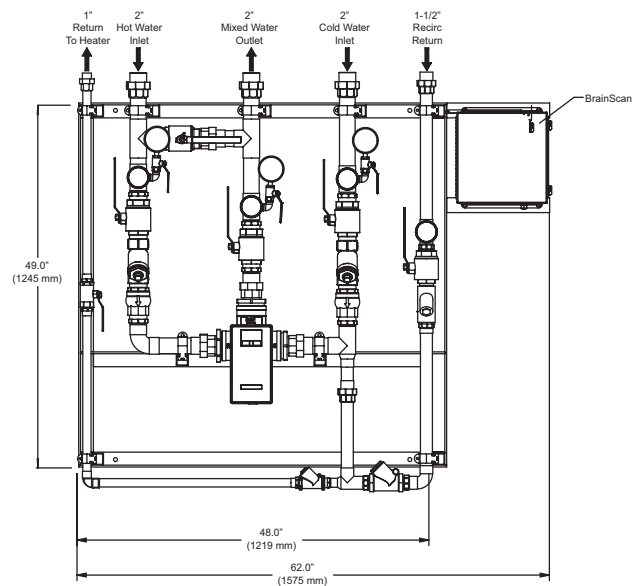
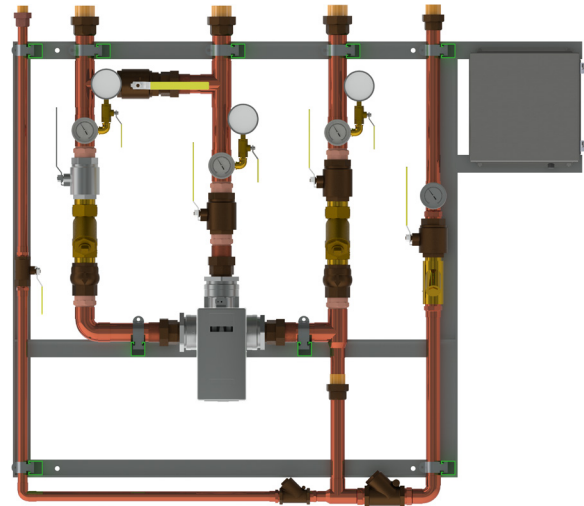
SPCO Relay Outputs – Relay which is energized during operation.

LCD Display – Provides information on set point, delivered temperature, error codes and alert conditions.

RS485 Serial Port – Connects the DRV to either BrainScan or Modbus.

BrainScan® – BAS interface for Modbus, Bacnet™ or LonWorks™ plus operates as a web server.

Modbus – DRV can be configured to communicate directly with Building Automation Systems (BAS) using Modbus protocols.



For a submittal drawing, refer to D40812.

| Recirculation Systems - Digital (gpm) | | | | | | | |
|---------------------------------------|---------------------|-----|-----|-----|-------------------------|---------------------------|----------------|
| Model | Pressure Drop (psi) | | | | Minimum System Draw-Off | Maximum Flow @7.5 ft/sec. | C _v |
| | 5 | 10 | 15 | 20 | | | |
| DMC50BS | 94 | 133 | 163 | 188 | 0 | 73 | 42 |

All dimensions and weights are approximate. Use certified print for exact dimensions. Design and materials are subject to change without notice.