



Water Temperature Control - Groups of Fixtures

Thermostatic

Rada 425-FMC

Rada Thermostatic Mixing Valve (TMV) for remote/secure cabinet mount “dead leg” group fixture control. Rada 425 is ideal for this application due to its low service, low inlet to outlet temperature differential requirement and low flow single fixture control capability.

Rada 425-FMC is supplied as standard* fully assembled and pressure tested in an 26" x 30" x 10" stainless steel recessed cabinet with a 2" flange. Cabinet has a polished stainless steel piano-hinged door with a keyed cylinder lock.

Rada 425-FMC is supplied as standard under this model number for top inlet hot and cold water supplies and a top outlet with a left-hand hinged door as indicated in adjacent drawing.

Rada 425-FMC can be specified/ordered with the following piping configurations under the following model numbers:

Top inlets/bottom outlet	425-FMC-TB
Bottom inlets/bottom outlet	425-FMC-BB
Bottom inlets/top outlet	425-FMC-BT

Technical Specifications

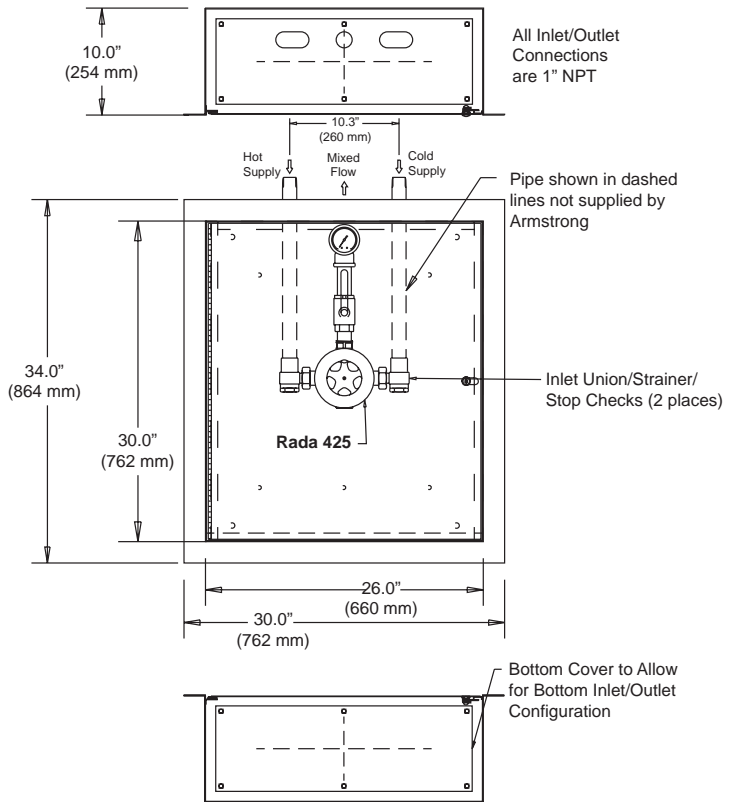
- 1" NPT inlets and 1" NPT outlet
- Cabinet construction: 18 gauge #4 finish stainless steel
- Cabinet options:
 - Premium: Stainless steel 14 gauge #4 finish
 - Baked Enamel: White enameled steel 18 gauge
- Cabinet outer flange 2"
- Outlet stop valve
- Integral thermometer
- Integral check stop/strainer/unions
- Refer to Rada 425, page 22, for Mixing Valve operating and technical specifications
- Shipping weight 70 lbs (27 kg)

NOTE: Available as above in a Surface Mounted Cabinet of the same size and specification, less recess flange, under model number 425-SMC.

For a submittal drawing, refer to CDLW1071.



White enameled steel 18 gauge available upon request.



All dimensions and weights are approximate. Use certified print for exact dimensions. Design and materials are subject to change without notice.