

DIMENSIONS & DATA CERTIFIED FOR:

Representative:

Order:

Customer:

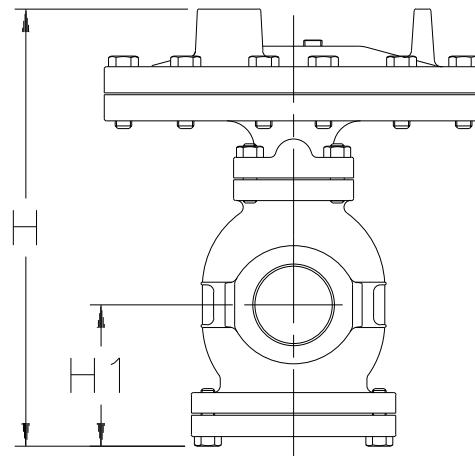
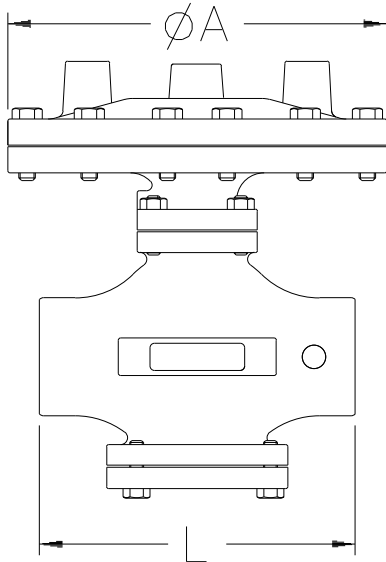
Order:

Project:

Requirements:

By:

Date:



Dimensions & Weights

SIZE	L	A	H	H ₁	Weight	C _v [K _v]
1/2" [15]	5-15/16" [151mm]	7-15/16" [202mm]	9-5/8" [244mm]	2-7/8" [73mm]	27 lbs. [12 kgs.]	5 [4.3]
3/4" [20]	5-15/16" [151mm]	7-15/16" [202mm]	9-5/8" [244mm]	2-7/8" [73mm]	27 lbs. [12 kgs.]	7.2 [6.2]
1" [25]	6-5/16" [160mm]	8-15/16" [227mm]	10" [254mm]	3-1/16" [78mm]	35 lbs. [16 kgs.]	10.9 [9.4]
1-1/4" [32]	7-1/8" [181mm]	8-15/16" [227mm]	11-1/8" [283mm]	3-1/2" [89mm]	43 lbs. [20 kgs.]	14.3 [12.4]
1-1/2" [40]	7-1/8" [181mm]	8-15/16" [227mm]	11-1/8" [283mm]	3-1/2" [89mm]	43 lbs. [20 kgs.]	18.8 [16.3]
2" [50]	9-1/16" [230mm]	10-15/16" [278mm]	12-5/8" [321mm]	4-1/2" [114mm]	66 lbs. [30 kgs.]	32 [27.7]

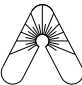


Armstrong Pressure/Temperature Group
221 Armstrong Blvd.,
Three Rivers, MI. 49093
Armstrong (269) 279-3600 Fax(269) 273-8656
Posted on Armstrong's homepage www.armstrong-intl.com

Product	CDY No.	Date
GD-2000K THREADED CONNECTIONS	1020	2/20/98
		Rev. A

Specifications				
Application	Inlet Pressure	Reduced Pressure	Maximum Temperature	Minimum Differential
Steam	15-300 psig [1-20.4 bar]	7-200 psig [0.5-13.6 bar]	450 °F [232 °C]	7 psig [.48 bar]

List Of Materials	
Body	Ductile Iron ASTM A536
Main Valve/Seat	Stainless Steel AISI 420
Pilot Valve/Seat	Stainless Steel AISI 420
Diaphragm	Stainless Steel AISI 301

 Armstrong Pressure/Temperature Group 221 Armstrong Blvd., Three Rivers, MI. 49093 Armstrong (269) 279-3600 Fax(269) 273-8656 Posted on Armstrong's homepage www.armstrong-intl.com		
Product	CDY No.	Date
GD-2000K THREADED CONNECTIONS	1020	2/18/98
		Rev. A