

# DIMENSIONS & DATA CERTIFIED FOR:

Representative:

Order:

Customer:

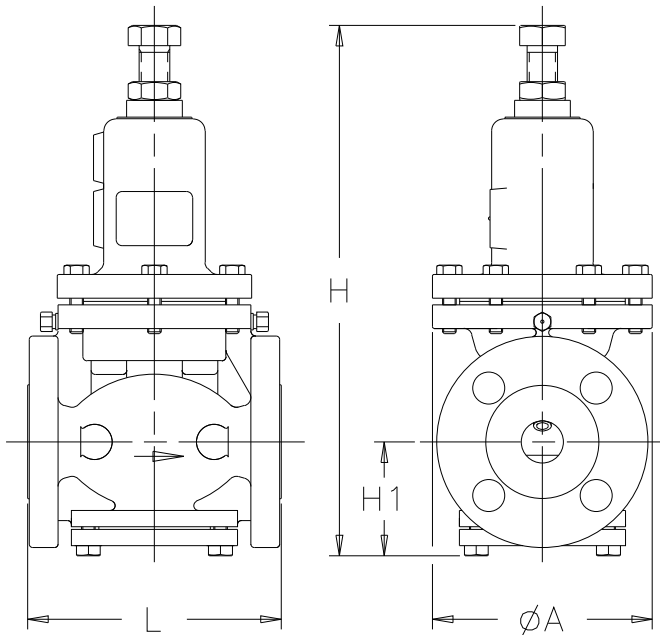
Order:

Project:

Requirements:

By:

Date:



### Dimensions

SIZE	L	A	H	H1	Cv [Kv]	Weight lbs [kgs]
	150 lb. Flange					
2 [50]	7.7 [195]	6.9 [175]	16.3 [415]	3.2 [81]	16 [14]	42 [19.0]
2-1/2 [65]	10.6 [270]	7.0 [178]	21.9 [555]	4.3 [110]	28 [24]	88 [39.9]
3 [80]	10.6 [270]	7.5 [190]	22.9 [582]	4.9 [125]	36 [31]	96 [43.5]
4 [100]	12.1 [308]	9.0 [229]	25.4 [645]	5.6 [143]	68 [59]	156 [70.8]
5 [125]	15.1 [384]	10.0 [254]	33.4 [849]	7.0 [179]	75 [65]	320 [145.1]
6 [150]	15.9 [404]	11.0 [279]	36.1 [918]	8.0 [204]	108 [93]	386 [175.1]

Dimensions In [ ] are metric.

### Materials

Body	Ductile Iron ASTM A536
Spring Chamber	Cast Iron ASTM A48
Main Valve	NBR
Valve Seat	STAINLESS STEEL AISI 304
Diaphragm	NBR
Flg. Conn.	ANSI 150 lb. Flange

**NOTES:**

- 1) Available in sizes below 2" upon request.
- 2) Differential valve (GD-21) available upon request.
- 3) Back pressure valve (GD-20R) available upon request.

### Specifications

Application	Inlet Pressure	Reduced Pressure psig [bar]		Maximum Temperature	Minimum Differential
Liquid Gas	150 psig [10.2 bar]	2"-3"	4"-6"	175 °F [79 °C]	7 psig [0.5 bar]
		7-36 [0.5-2.5]	7-36 [0.5-2.5]		
		37-100 [2.5-6.8]	37-72 [2.5-4.9]		



Product  
**GD-200**  
PRESSURE REDUCING VALVE

ENGLISH  
WEB  
YIN

CD No.  
**CD2106**  
Rev; B

Date  
**05/18/2011**  
By; *Hooley*