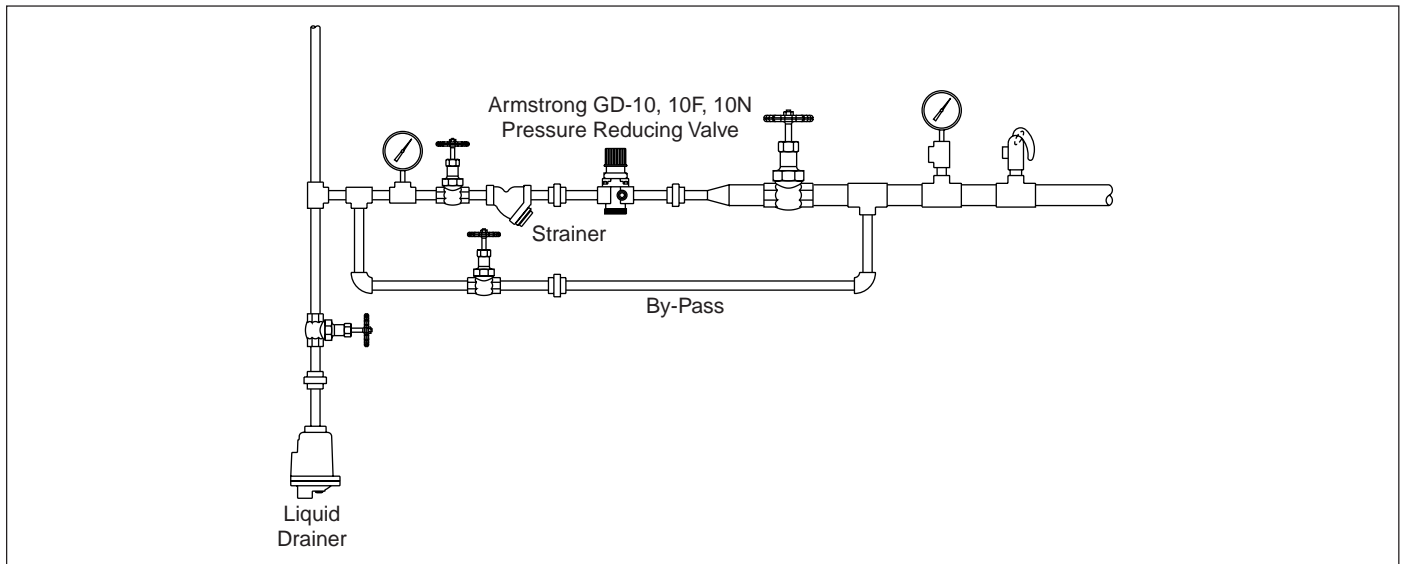


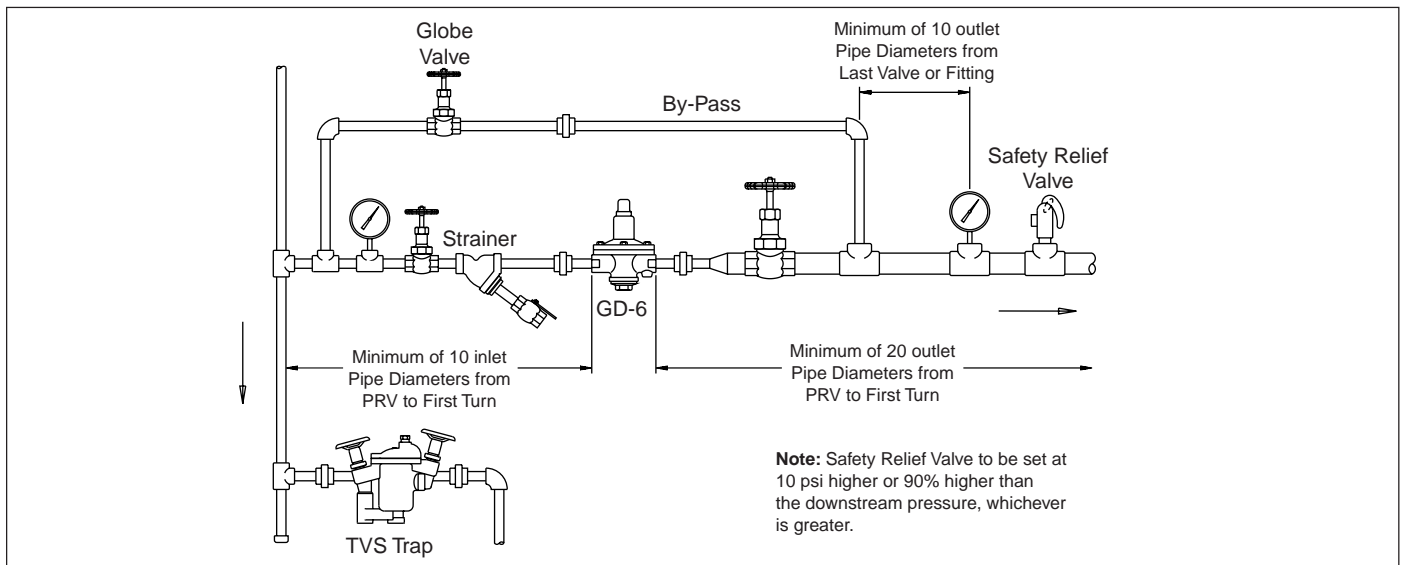


Model GD-10, GD-10N and GD-10F Pressure Reducing Valve Installation and Maintenance Instructions

Typical Piping For Air



Typical Piping For Steam



This bulletin should be used by experienced personnel as a guide to the installation of the Model GD-10, GD-10N and GD-10F Pressure Reducing Valve. Selection or installation of equipment should always be accompanied by competent technical assistance. You are encouraged to contact Armstrong International, Inc. or its local representative for additional information.

Start-Up and Adjusting Procedures

Improper adjustment of the pressure reducing valve may cause hunting, scale problems, etc., and damage to the valve itself. Adjust the valve as follows:

1. Close the gate valves before and after the pressure reducing valve. Open the globe valve in the bypass line and blow down the inlet piping. Adjust the opening of the bypass valve so that the safety valve if used does not blow. After blowing the system down, close the bypass valve.
2. Loosen the lock nut and adjusting screw to relieve the adjusting spring.
3. Slowly open the inlet side gate valve to the fully open position, and partially open the outlet valve so only a small amount of fluid can pass.

4. Slowly turn the adjusting screw clockwise until the desired pressure is obtained on the downstream pressure gauge.

5. Slowly open the outlet valve to the fully open position.

6. After adjustment, fasten the lock nut.

Troubleshooting Guide and Disassembly Instructions

Problem	Cause	Solution
The desired pressure cannot be obtained	The inlet pressure is not suitable.	Change the pressure to the appropriate level.
	The valve size is excessively smaller than what is required	Change to the appropriate size.
	The inlet strainer is clogged by a foreign substance	Disassemble and clean the strainer
	The pressure gauge is out of order.	Replace the gauge
The outlet pressure rises higher than the specified pressure.	The valve and the valve seat are clogged by a foreign substance	Disassemble and clean the valve seat
	The "O" ring is damaged	Replace the "O" Ring

Disassembly of Body

Turn the valve guide counterclockwise and remove it from the body. Pull out and remove the valve and spring.

Disassembly of Diaphragm

1. Slightly loosen the lock nut (16) and turn the handle counterclockwise to unload the adjusting spring (17).

2. Remove the lock nut (16) and remove the bonnet (?) from the body (1). Pull out and remove the top spring plate (6), adjusting screw (15), and diaphragm (19).

Notes To Reassemble

1. Check to be sure the disc (9) and the seat (12) are not flawed.
2. Apply grease to the "O" ring (27).
3. Attach the diaphragm (19) to the specified location without twisting.

