

DIMENSIONS & DATA CERTIFIED FOR:

Representative:

Order:

Customer:

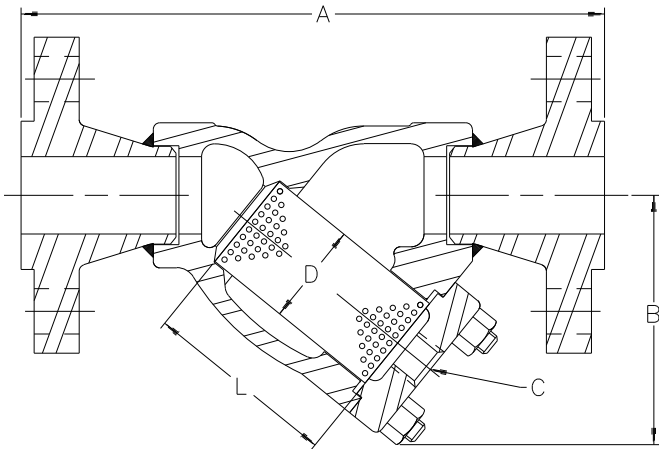
Order:

Project:

Requirements:

By:

Date:



B1FL

Flange Conn. ANSI B16.5
Dimensions A & B $\pm 1/4$ [6mm]

1-1/2 Strainer Class 600 Shown Above
Dimensions Are In English [mm]

LIST OF MATERIALS:

NAME OF PART	MATERIAL
BODY	ASTM A216 GR. WCB
SCREEN	T304 SS .045 PERF.
GASKET, RETAINER	SS NON-ASBESTOS
RETAINER, BOLTED	ASTM A216 GR. WCB
STUD	ASTM A193 GR. B7
NUT	ASTM A194 GR. 2H

TECHNICAL INFORMATION

DESCRIPTION	CLASS 150		
CONNECTION (FLG.) [DN]	1-1/4[32]	1-1/2[40]	2[50]
"A" (FACE TO FACE)	9-1/16[230]	10-3/16[259]	11-1/2[292]
"B" (BOTTOM TO ϕ INLET)	4-1/4[108]	4-13/16[122]	5-3/4[146]
"C" (BLOW DOWN THREAD) [DN]	1/2 NPT [15]		
"D" (DIA. OF SCREEN)	1-1/2[38]	1-63/64[50]	2-3/8[60]
"L" (LENGTH OF SCREEN)	3-3/8[86]	3-3/4[95]	4-5/8[117]
WEIGHT [kgs]	12-1/2 lb[5.7]	18 lb [8.2]	31 lb [14.1]
MAXIMUM ALLOWABLE PRESSURE (VESSEL DESIGN)	205 psig @ 390°F [14.1 bar @ 198.8°C] 285 psig @ 100°F [19.6 bar @ 37.8°C]		
DESCRIPTION	CLASS 300		
CONNECTION (FLG.) [DN]	1-1/4[32]	1-1/2[40]	2[50]
"A" (FACE TO FACE)	9-11/16[246]	10-11/16[271]	12[308]
"B" (BOTTOM TO ϕ INLET)	4-1/4[108]	4-13/16[122]	5-3/4[146]
"C" (BLOW DOWN THREAD) [DN]	1/2 NPT [15]		
"D" (DIA. OF SCREEN)	1-1/2[38]	1-63/64[50]	2-3/8[60]
"L" (LENGTH OF SCREEN)	3-3/8[86]	3-3/4[95]	4-5/8[117]
WEIGHT [kgs]	17-1/2 lb[7.9]	24 lb[11]	29 lb[13.2]
MAXIMUM ALLOWABLE PRESSURE (VESSEL DESIGN)	605 psig @ 490°F [41.7 bar @ 254.4°C] 740 psig @ 100°F [51 bar @ 37.8°C]		
DESCRIPTION	CLASS 600		
CONNECTION (FLG.) [DN]	1-1/4[32]	1-1/2[40]	2[50]
"A" (FACE TO FACE)	10-5/16[262]	11-5/16[287]	12-3/4[324]
"B" (BOTTOM TO ϕ INLET)	4-1/4[108]	4-13/16[122]	5-3/4[146]
"C" (BLOW DOWN THREAD) [DN]	1/2 NPT [15]		
"D" (DIA. OF SCREEN)	1-1/2[38]	1-63/64[50]	2-3/8[60]
"L" (LENGTH OF SCREEN)	3-3/8[86]	3-3/4[95]	4-5/8[117]
WEIGHT [kgs]	18-1/2 lb[8.4]	31 lb[14]	33 lb[15]
MAXIMUM ALLOWABLE PRESSURE (VESSEL DESIGN)	1135 psig @ 562°F [78 bar @ 294°C] 1480 psig @ 100°F [102 bar @ 37.8°C]		



Armstrong

www.armstronginternational.com

Product

ENGLISH

CD No.

Date

STRAINER

B1FL W/ CL. 150, 300 & 600 FLGS.

1-1/4" - 2" WCB

WEB

YIN

✓

1051

10/12/09

Rev; C

Sht. 1

By; paulg

cn22261

DIMENSIONS & DATA CERTIFIED FOR:

Representative:

Order:

Customer:

Order:

Project:

Requirements:

By:

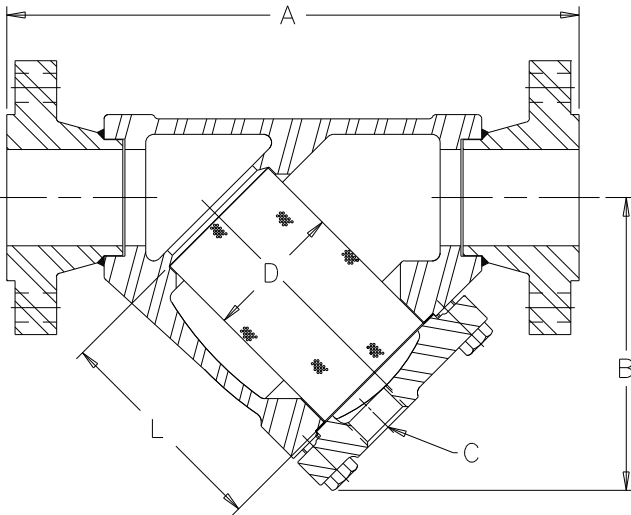
Date:

LIST OF MATERIALS:

NAME OF PART	MATERIAL
BODY	ASTM A216 GR. WCB
SCREEN	T304 SS .045 PERF.
GASKET, RETAINER	SS NON-ASBESTOS
RETAINER, BOLTED	ASTM A216 GR. WCB
BOLT	ASTM A193 GR. B7

TECHNICAL INFORMATION

DESCRIPTION	CLASS 150
CONNECTION (FLG.) [DN]	3[80]
"A" (FACE TO FACE)	15-5/8[397]
"B" (BOTTOM TO ϕ INLET)	8-1/2[216]
"C" (BLOW DOWN THREAD)[DN]	1-1/4 NPT [32]
"D" (DIA. OF SCREEN)	4-3/16[106]
"L" (LENGTH OF SCREEN)	6-5/8[168]
WEIGHT [kgs]	60 lb[27.2]
MAXIMUM ALLOWABLE PRESSURE (VESSEL DESIGN)	205 psig @ 390°F [14.1 bar @ 198.8°C] 285 psig @ 100°F [19.6 bar @ 37.8°C]
DESCRIPTION	CLASS 300
CONNECTION (FLG.) [DN]	3[80]
"A" (FACE TO FACE)	16-3/8[416]
"B" (BOTTOM TO ϕ INLET)	8-1/2[216]
"C" (BLOW DOWN THREAD)[DN]	1-1/4 NPT [32]
"D" (DIA. OF SCREEN)	4-3/16[106]
"L" (LENGTH OF SCREEN)	6-5/8[168]
WEIGHT [kgs]	69 lb[31.3]
MAXIMUM ALLOWABLE PRESSURE (VESSEL DESIGN)	605 psig @ 490°F [41.7 bar @ 254.4°C] 740 psig @ 100°F [51 bar @ 37.8°C]
DESCRIPTION	CLASS 600
CONNECTION (FLG.) [DN]	3[80]
"A" (FACE TO FACE)	17-1/8[435]
"B" (BOTTOM TO ϕ INLET)	8-1/2[216]
"C" (BLOW DOWN THREAD)[DN]	1-1/4 NPT [32]
"D" (DIA. OF SCREEN)	4-3/16[106]
"L" (LENGTH OF SCREEN)	6-5/8[168]
WEIGHT [kgs]	78 lb[35.4]
MAXIMUM ALLOWABLE PRESSURE (VESSEL DESIGN)	1135 psig @ 562°F [78 bar @ 294°C] 1480 psig @ 100°F [102 bar @ 37.8°C]



B1FL

Flange Conn. ANSI B16.5
Dimensions A & B $\pm 1/4$ [6mm]

3" Strainer Class 600 Shown Above
Dimensions Are In English [mm]



Product	ENGLISH	CD No.	Date
	STRAINER	1051	10/13/09
B1FL W/ CL. 150, 300 & 600 FLGS. 3" WCB	WEB Y N ✓	Rev; A	Sht. 2 By; paulg

CN22261