

DIMENSIONS & DATA CERTIFIED FOR:

Representative:

Order:

Customer:

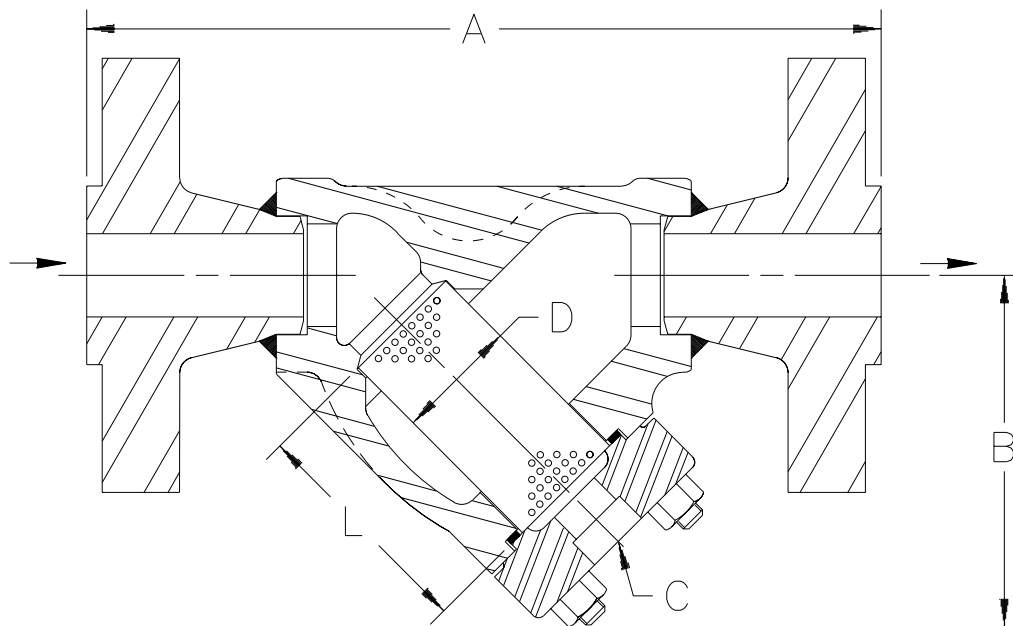
Order:

Project:

Requirements:

By:

Date:




C1FL

Flange Conn. ANSI B16.5
Dimensions A & B ±1/4" [3mm]

1-1/2" Strainer shown above

DESCRIPTION	DIMENSIONS		
CONNECTION (CL. 1500 RF FLG.)	1-1/4" [DN32]	1-1/2" [DN40]	2" [DN50]
"A" (FACE TO FACE)	12-1/8" [308mm]	12-13/16" [325mm]	15-5/8" [397mm]
"B" (BOTTOM TO ϕ INLET)	5-3/4" [146mm]		7-1/8" [181mm]
"C" (BLOW DOWN THD.) NPT or SW	3/4" [DN20]		1" [DN25]
"D" (DIA. OF SCREEN)	1-63/64" [50mm]		2-3/8" [60mm]
"L" (LENGTH OF SCREEN)	3-3/4" [95mm]		4-5/8" [117mm]
WEIGHT	39.4 lb [18 kgs]	44 lb [20 kgs]	76 lb [34.5 kgs]
MAXIMUM ALLOWABLE PRESSURE (VESSEL DESIGN)	2515 psig at 670°F [173 bar at 354°C] 3600 psig at 100°F [249 bar at 37.8°C]		

LIST OF MATERIALS	
NAME OF PART	MATERIAL
BODY	ASTM A217 GR. WC6
SCREEN	T304 SS .045" PERF.
GASKET, RETAINER	SS NON-ASBESTOS
RETAINER, BOLTED	ASTM A217 GR. WC6
STUD	ASTM A193 GR. B16
NUT	ASTM A194 GR. 2H



Armstrong International, Inc.
Three Rivers Division
Three Rivers, MI 49093
(616) 273-1415 Fax (616) 278-6555

Product	CD No.	Date
STRAINER, C1FL W/ CL. 1500 FLGS. 1-1/4" - 2" WC6	1058	1/9/97
		Rev. A