

DIMENSIONS & DATA CERTIFIED FOR:

Representative:

Order:

Customer:

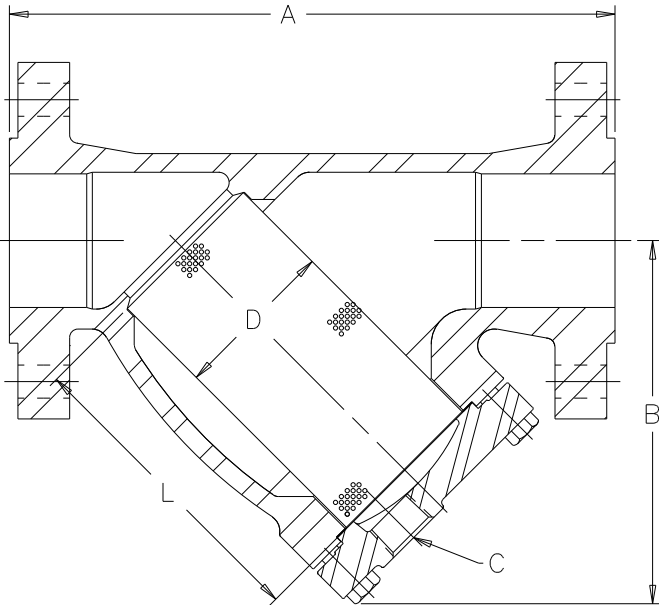
Order:

Project:

Requirements:

By:

Date:



E7FL

Flange Conn. ANSI B16.5
Dimensions A & B ±1/4 [6mm]

4" Strainer Class 600 Shown Above
Dimensions Are In English [mm]

LIST OF MATERIALS:

NAME OF PART	MATERIAL
BODY	ASTM A351 GR. CF8M
SCREEN	T316 SS .045 PERF.
GASKET, RETAINER	SS NON-ASBESTOS
RETAINER, BOLTED	ASTM A351 GR. CF8M
BOLT	ASTM A193 GR. B7

TECHNICAL INFORMATION

DESCRIPTION	CLASS 150	
CONNECTION (FLG.) [DN]	4[100]	6[150]
"A" (FACE TO FACE)	16-5/8[422]	22-5/8[575]
"B" (BOTTOM TO ϕ INLET)	10-13/16[265]	15-3/4[400]
"C" (BLOW DOWN THREAD) [DN]	1-1/4 NPT [32]	1-1/2 NPT [40]
"D" (DIA. OF SCREEN)	4-15/16[125]	7-11/16[195]
"L" (LENGTH OF SCREEN)	9-5/16[237]	13-1/8[333]
WEIGHT [kgs]	112 lb[51]	265 lb[120]
MAXIMUM ALLOWABLE PRESSURE (VESSEL DESIGN)	200 psig @ 382°F [14 bar @ 194.4°C] 275 psig @ 100°F [19 bar @ 37.8°C]	
DESCRIPTION	CLASS 300	
CONNECTION (FLG.) [DN]	4[100]	6[150]
"A" (FACE TO FACE)	17-1/4[438]	23-1/2[597]
"B" (BOTTOM TO ϕ INLET)	10-13/16[265]	15-3/4[400]
"C" (BLOW DOWN THREAD) [DN]	1-1/4 NPT [32]	1-1/2 NPT [40]
"D" (DIA. OF SCREEN)	4-15/16[125]	7-11/16[195]
"L" (LENGTH OF SCREEN)	9-5/16[237]	13-1/8[333]
WEIGHT [kgs]	133 lb[60]	302 lb[137]
MAXIMUM ALLOWABLE PRESSURE (VESSEL DESIGN)	495 psig @ 466°F [34 bar @ 241°C] 720 psig @ 100°F [50 bar @ 37.8°C]	
DESCRIPTION	CLASS 600	
CONNECTION (FLG.) [DN]	4[100]	
"A" (FACE TO FACE)	18-1/4[464]	
"B" (BOTTOM TO ϕ INLET)	10-13/16[265]	
"C" (BLOW DOWN THREAD) [DN]	1-1/4 NPT [32]	
"D" (DIA. OF SCREEN)	4-15/16[125]	
"L" (LENGTH OF SCREEN)	9-5/16[237]	
WEIGHT [kgs]	150 lb[68]	
MAXIMUM ALLOWABLE PRESSURE (VESSEL DESIGN)	935 psig @ 537°F [64 bar @ 280°C] 1440 psig @ 100°F [99 bar @ 37.8°C]	



www.armstronginternational.com

Product	ENGLISH	CD No.	Date
STRAINER		1068	10/13/09
E7FL W/ CL. 150, 300 & 600 FLGS.	WEB Y N		
4" & 6" CF8M	CN22261	Rev; B	Sht. 1 By; paulg