

DIMENSIONS & DATA CERTIFIED FOR:

Representative:

Order:

Customer:

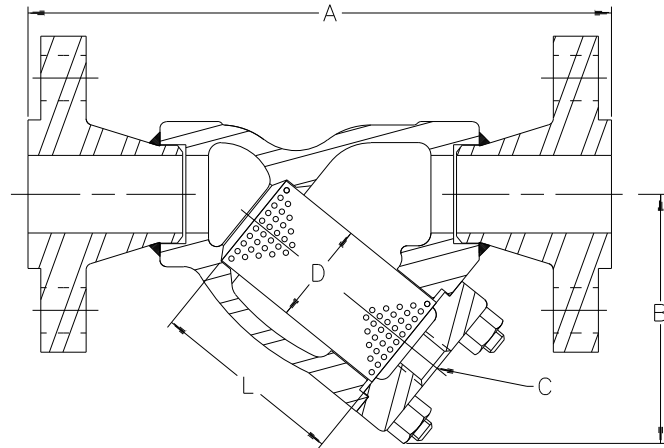
Order:

Project:

Requirements:

By:

Date:



E7FL

Flange Conn. ANSI B16.5
Dimensions A & B $\pm 1/4$ [6mm]

1-1/2 Strainer Class 600 Shown Above
Dimensions Are In English [mm]

LIST OF MATERIALS:

| NAME OF PART | MATERIAL |
|------------------|--------------------|
| BODY | ASTM A351 GR. CF8M |
| SCREEN | T316 SS .045 PERF. |
| GASKET, RETAINER | SS NON-ASBESTOS |
| RETAINER, BOLTED | ASTM A351 GR. CF8M |
| STUD | ASTM A193 GR. B7 |
| NUT | ASTM A194 GR. 2H |

TECHNICAL INFORMATION

| DESCRIPTION | CLASS 150 | |
|--|--|--------------|
| CONNECTION (FLG.) [DN] | 1-1/2[40] | 2[50] |
| "A" (FACE TO FACE) | 10-3/16[259] | 11-1/2[292] |
| "B" (BOTTOM TO ϕ INLET) | 4-13/16[122] | 5-3/4[146] |
| "C" (BLOW DOWN THREAD) [DN] | 1/2 NPT [15] | |
| "D" (DIA. OF SCREEN) | 1-63/64[50] | 2-3/8[60] |
| "L" (LENGTH OF SCREEN) | 3-3/4[95] | 4-5/8[117] |
| WEIGHT [kgs] | 18 lb [8.2] | 31 lb [14.1] |
| MAXIMUM ALLOWABLE PRESSURE (VESSEL DESIGN) | 110 psig @ 700°F [7.58 bar @ 371°C] 275 psig @ 100°F [18.9 bar @ 37.8°C] | |
| DESCRIPTION | CLASS 300 | |
| CONNECTION (FLG.) [DN] | 1-1/2[40] | 2[50] |
| "A" (FACE TO FACE) | 10-11/16[271] | 12[308] |
| "B" (BOTTOM TO ϕ INLET) | 4-13/16[122] | 5-3/4[146] |
| "C" (BLOW DOWN THREAD) [DN] | 1/2 NPT [15] | |
| "D" (DIA. OF SCREEN) | 1-63/64[50] | 2-3/8[60] |
| "L" (LENGTH OF SCREEN) | 3-3/4[95] | 4-5/8[117] |
| WEIGHT [kgs] | 24 lb [11] | 29 lb [13.2] |
| MAXIMUM ALLOWABLE PRESSURE (VESSEL DESIGN) | 395 psig @ 900°F [27.2 bar @ 482°C] 720 psig @ 100°F [49.6 bar @ 37.8°C] | |
| DESCRIPTION | CLASS 600 | |
| CONNECTION (FLG.) [DN] | 1-1/2[40] | 2[50] |
| "A" (FACE TO FACE) | 11-5/16[287] | 12-3/4[324] |
| "B" (BOTTOM TO ϕ INLET) | 4-13/16[122] | 5-3/4[146] |
| "C" (BLOW DOWN THREAD) [DN] | 1/2 NPT [15] | |
| "D" (DIA. OF SCREEN) | 1-63/64[50] | 2-3/8[60] |
| "L" (LENGTH OF SCREEN) | 3-3/4[95] | 4-5/8[117] |
| WEIGHT [kgs] | 31 lb [14] | 33 lb [15] |
| MAXIMUM ALLOWABLE PRESSURE (VESSEL DESIGN) | 790 psig @ 900°F [54.5 bar @ 482°C] 1440 psig @ 100°F [99.3 bar @ 37.8°C] | |



Armstrong
www.armstronginternational.com

Product

ENGLISH

CD No.

Date

STRAINER
E7FL W/ CL. 150, 300 & 600 FLGS.
1-1/2" - 2" CF8M

WEB
Y|N
✓

1063

10/12/09

Rev; B

Sht. 1

By; paulg

CN22261

DIMENSIONS & DATA CERTIFIED FOR:

Representative:

Order:

Customer:

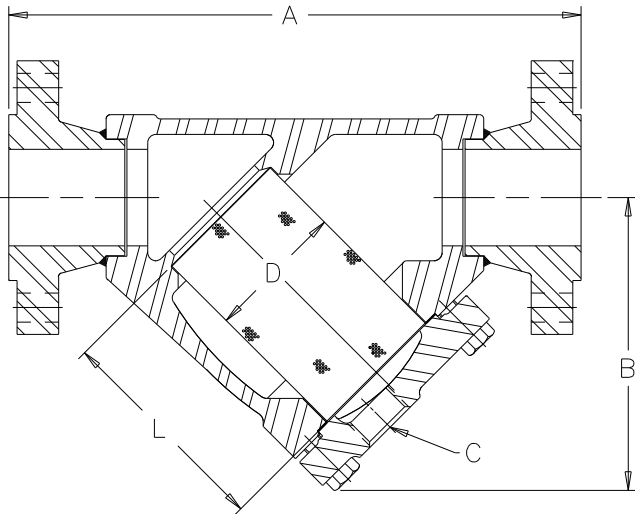
Order:

Project:

Requirements:

By:

Date:



E7FL

Flange Conn. ANSI B16.5
Dimensions A & B $\pm 1/4$ [6mm]

3" Strainer Class 600 Shown Above
Dimensions Are In English [mm]

LIST OF MATERIALS:

| NAME OF PART | MATERIAL |
|------------------|--------------------|
| BODY | ASTM A351 GR. CF8M |
| SCREEN | T316 SS .045 PERF. |
| GASKET, RETAINER | SS NON-ASBESTOS |
| RETAINER, BOLTED | ASTM A351 GR. CF8M |
| BOLT | ASTM A193 GR. B7 |

TECHNICAL INFORMATION

| DESCRIPTION | CLASS 150 |
|--|--|
| CONNECTION (FLG.) [DN] | 3[80] |
| "A" (FACE TO FACE) | 15-5/8[397] |
| "B" (BOTTOM TO ϕ INLET) | 8-1/2[216] |
| "C" (BLOW DOWN THREAD)[DN] | 1-1/4 NPT [32] |
| "D" (DIA. OF SCREEN) | 4-3/16[106] |
| "L" (LENGTH OF SCREEN) | 6-5/8[168] |
| WEIGHT [kgs] | 60 lb[27.2] |
| MAXIMUM ALLOWABLE PRESSURE (VESSEL DESIGN) | 110 psig @ 700°F [8 bar @ 371°C] 275 psig @ 100°F [19 bar @ 37.8°C] |
| DESCRIPTION | CLASS 300 |
| CONNECTION (FLG.) [DN] | 3[80] |
| "A" (FACE TO FACE) | 16-3/8[416] |
| "B" (BOTTOM TO ϕ INLET) | 8-1/2[216] |
| "C" (BLOW DOWN THREAD)[DN] | 1-1/4 NPT [323] |
| "D" (DIA. OF SCREEN) | 4-3/16[106] |
| "L" (LENGTH OF SCREEN) | 6-5/8[168] |
| WEIGHT [kgs] | 69 lb[31.3] |
| MAXIMUM ALLOWABLE PRESSURE (VESSEL DESIGN) | 395 psig @ 900°F [27 bar @ 482°C] 720 psig @ 100°F [50 bar @ 37.8°C] |
| DESCRIPTION | CLASS 600 |
| CONNECTION (FLG.) [DN] | 3[80] |
| "A" (FACE TO FACE) | 17-1/8[435] |
| "B" (BOTTOM TO ϕ INLET) | 8-1/2[216] |
| "C" (BLOW DOWN THREAD)[DN] | 1-1/4 NPT [32] |
| "D" (DIA. OF SCREEN) | 4-3/16[106] |
| "L" (LENGTH OF SCREEN) | 6-5/8[168] |
| WEIGHT [kgs] | 78 lb[35.4] |
| MAXIMUM ALLOWABLE PRESSURE (VESSEL DESIGN) | 790 psig @ 900°F [55 bar @ 482°C] 1440 psig @ 100°F [99 bar @ 37.8°C] |



Armstrong

www.armstronginternational.com

Product

ENGLISH

CD No.

Date

STRAINER
E7FL W/ CL. 150, 300 & 600 FLGS.
3" CF8M

WEB
Y|N
✓

1063

10/13/09

Rev; A

Sht. 2

By; paulg

CN22261