

DIMENSIONS & DATA CERTIFIED FOR:

Representative:

Order:

Customer:

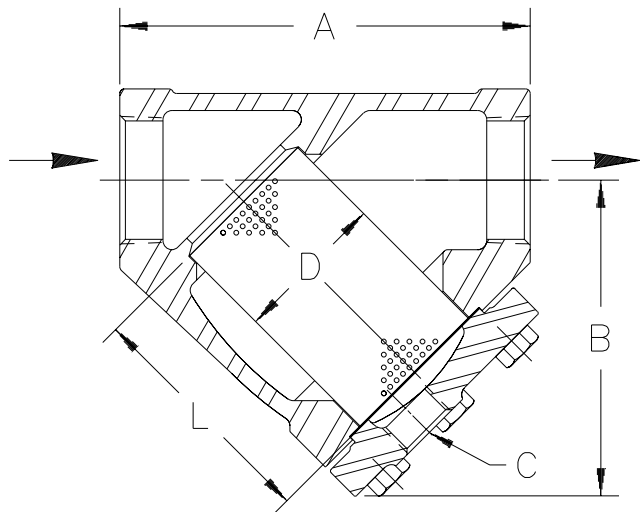
Order:

Project:

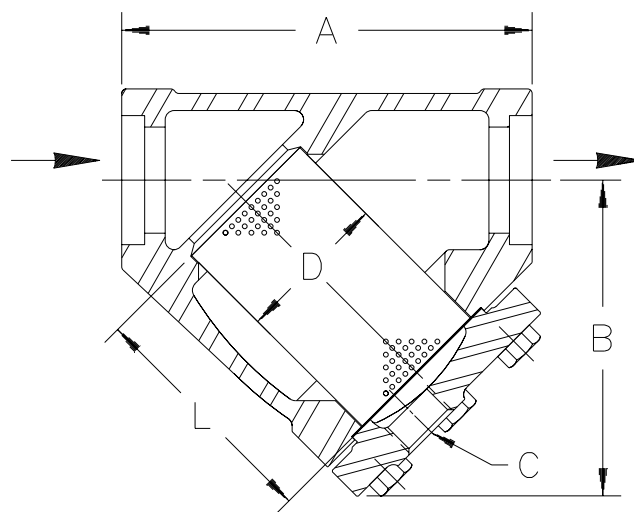
Requirements:

By:

Date:



E7SC




E7SW

Socket Weld Conn. ANSI B16.11
Dimensions A & B ±1/8" [3mm]

DESCRIPTION	DIMENSIONS
CONNECTION (NPT & SW)	3" [DN 80]
"A" (FACE TO FACE)	11-1/4" [286mm]
"B" (BOTTOM TO Q INLET)	8-5/8" [219mm]
"C" (BLOW DOWN THREAD)	1-1/4" NPT [DN 32]
"D" (DIA. OF SCREEN)	4-3/16" [106mm]
"L" (LENGTH OF SCREEN)	6-5/8" [168mm]
WEIGHT	50 lb [22.7 kgs]
MAXIMUM ALLOWABLE PRESSURE (VESSEL DESIGN)	935 psig at 538°F [64 bar at 281°C] 1440 psig at 100°F [99 bar at 37.8°C]

LIST OF MATERIALS	
NAME OF PART	MATERIAL
BODY	ASTM A351 GR. CF8M
SCREEN	T316 SS .045" PERF.
GASKET, RETAINER	NON-ASBESTOS
RETAINER, BOLTED	ASTM A351 GR. CF8M
SCREW, CAP	ASTM A193 GR. B7



Armstrong International, Inc.
Three Rivers Division
Three Rivers, MI 49093
Armstrong (616) 273-1415 Fax(616) 278-6555

Product	CD No.	Date
STRAINER E7SC & E7SW 3" CF8M	1062	11/18/96
		Rev. A