

DIMENSIONS & DATA CERTIFIED FOR:

Representative:

Order:

Customer:

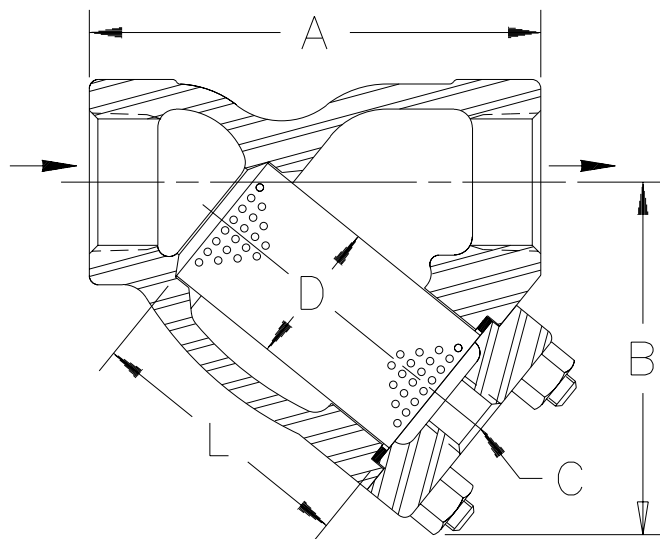
Order:

Project:

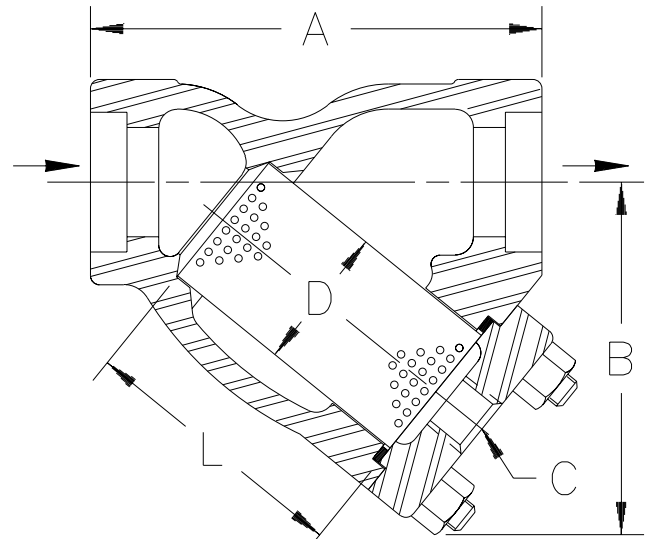
Requirements:

By:

Date:



E7SC



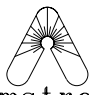
E7SW

1-1/2" Strainers shown above

Socket Weld Conn. ANSI B16.11
Dimensions A & B ±1/8" [3mm]

DESCRIPTION	DIMENSIONS		
CONNECTION (NPT & SW)	1-1/4" [DN32]	1-1/2" [DN40]	2" [DN50]
"A" (FACE TO FACE)	5-1/2" [140mm]	6-5/16" [160mm]	7-3/4" [197mm]
"B" (BOTTOM TO ϕ INLET)	4-1/8" [105mm]	4-13/16" [123mm]	5-1/2" [140mm]
"C" (BLOW DOWN THREAD)	1/2" NPT [DN15]		
"D" (DIA. OF SCREEN)	1-1/2" [38mm]	1-63/64" [50mm]	2-3/8" [60mm]
"L" (LENGTH OF SCREEN)	3-3/8" [86mm]	3-3/4" [95mm]	4-5/8" [117mm]
WEIGHT	7-1/2 lb [3.4 kgs]	11 lb [5.0 kgs]	17 lb [7.7 kgs]
MAXIMUM ALLOWABLE PRESSURE (VESSEL DESIGN)	935 psig at 538°F [64 bar at 281°C] 1440 psig at 100°F [99 bar at 37.8°C]		

LIST OF MATERIALS	
NAME OF PART	MATERIAL
BODY	ASTM A351 GR. CF8M
SCREEN	T316 SS .045" PERF.
GASKET, RETAINER	SS NON-ASBESTOS
RETAINER, BOLTED	ASTM A351 GR. CF8M
STUD	ASTM A193 GR. B7
NUT	ASTM A194 GR. 2H



Armstrong International, Inc.
Three Rivers Division
Three Rivers, MI 49093
Armstrong (616) 273-1415 Fax(616) 278-6555

Product	CD No.	Date
STRAINER E7SC & E7SW 1-1/4" - 2" CF8M	1061	11/18/96
		Rev. A