

DIMENSIONS & DATA CERTIFIED FOR:

Representative:

Order:

Customer:

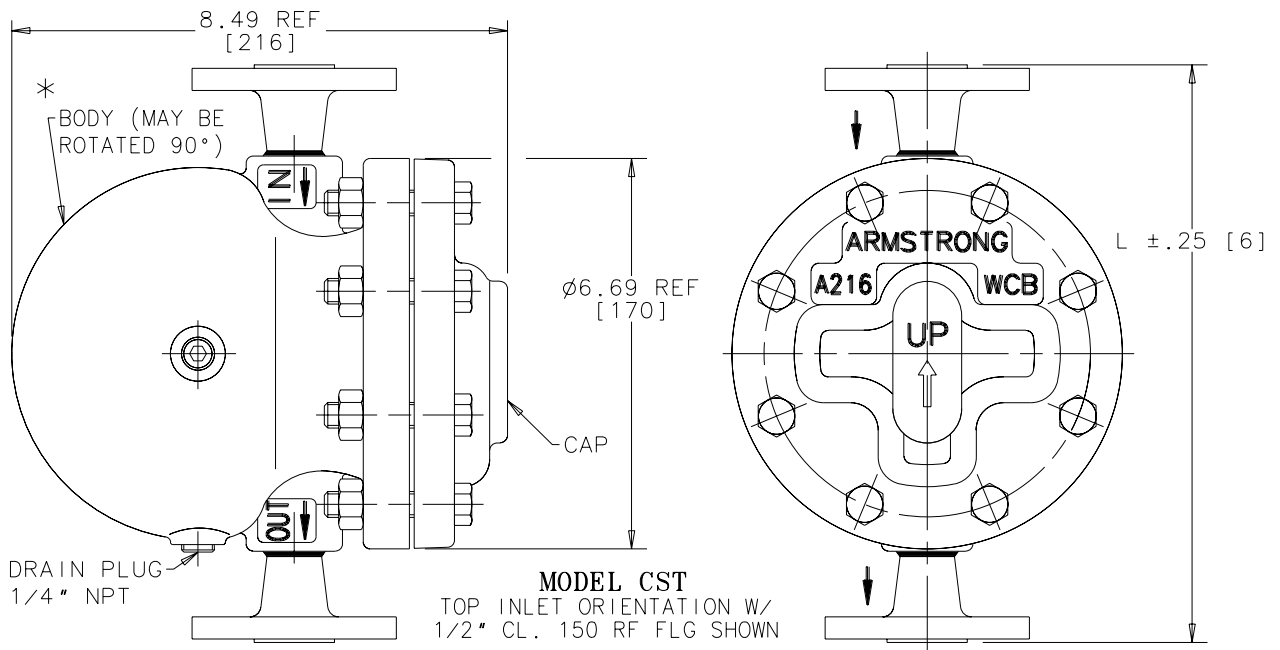
Order:

Project:

Requirements:

By:

Date:



MODEL NO.	*ORIENTATION OF BODY INLET CST (TOP) CSL (LEFT) CSR (RIGHT)					
FLANGE ANSI B16.5	CL.150 RF FLG.		CL.300 RF FLG.		CL.600 RF FLG.	
CONNECTION SIZE	1/2"	3/4"	1/2"	3/4"	1/2"	3/4"
"L" DIM. [L DIM MM]	9.91[252]	10.01[254]	10.27[261]	10.39[264]	10.77[274]	10.89[277]
WEIGHT lbs. [kg]	30.1[13.7]	31.6[14.3]	31.4[14.2]	34.2[15.5]	32.1[14.6]	34.6[15.7]
MAXIMUM ALLOWABLE PRESSURE	PMA 600 psi [41 bar] at TMA 650°F [343°C] (VESSEL LIMIT)			DERATE ACCORDING TO FLANGE CLASS		

LIST OF MATERIALS	
CAP & BODY	ASTM A216 WCB
GASKET, BODY	GRAPHITE BONDED
BOLT (8)	ASTM A193 GR. B7
NUT (8)	ASTM A194 GR. 2H
SEAT, VALVE	ASTM A582 T303
VALVE	ASTM A564 TYPE 630
RETAINER, VALVE	ASTM A167 T302
PIVOT PIN	ASTM A580 T304
FLOAT	
LEVER ASS'Y	ASTM A167 T304
WT ASS'Y	T304 S.S.
GASKET, WT	18-8 S.S.
NAME PLATE	T304 S.S.
PLUG, DRAIN (3)	CARBON STEEL
WELD NECK FLG. RF	ASTM A105

NOTE:

1. DIMENSIONS ARE IN INCHES [mm]
2. RF FLANGE CONNS ANSI B16.5

Armstrong International, Inc. Three Rivers Division Three Rivers, MI 49093 (616) 273-1415 Fax(616) 278-6555 Posted on Armstrong's homepage www.armstrong-intl.com		
Product CST, CSL & CSR F&T 1/2" & 3/4" CONN. CL.150,300 & 600 RF	CD No. 1236	Date 11/10/00 Rev. A