

# DIMENSIONS & DATA CERTIFIED FOR:

Representative:

Order:

Customer:

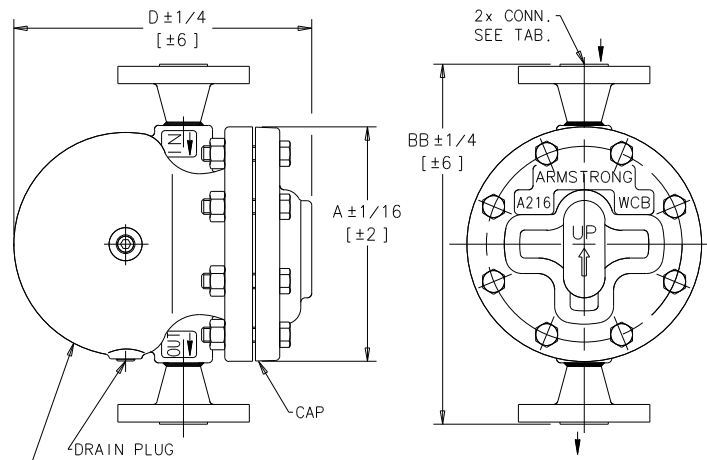
Order:

Project:

Requirements:

By:

Date:



**MODEL CST**  
TOP INLET ORIENTATION  
CL 300 1/2 CONN. SHOWN ABOVE

\* BODY (MAY BE ROTATED 90°) \*

| OPTIONS:         |             |
|------------------|-------------|
| BODY ORIENTATION | CSL (Top)   |
|                  | CSR (Left)  |
|                  | CSR (Right) |

Dimensions Are In Inches[mm]  
ANSI B16.11

## LIST OF MATERIALS:

| NAME OF PART       | MATERIAL                       |
|--------------------|--------------------------------|
| CAP & BODY         | ASTM A216 WCB                  |
| GASKET, BODY       | GRAPHITE BONDED                |
| BOLT (8)           | ASTM A193 GR. B7               |
| NUT (8)            | ASTM A194 GR. 2H               |
| SEAT, VALVE        | ASTM A582 T303                 |
| VALVE              | ASTM A582 T440F/ASTM A564 T630 |
| RETAINER, VALVE    | ASTM A167 T302                 |
| PIVOT PIN          | ASTM A580 T304                 |
| FLOAT              | ASTM A167 T304                 |
| LEVER ASS'Y        |                                |
| WT ASS'Y           | T304 S.S.                      |
| GASKET, WT         | 18-8 S.S.                      |
| NAME PLATE         | ALUMINUM                       |
| PLUG, DRAIN NPT(3) | CARBON STEEL                   |

## TECHNICAL INFORMATION

| MODEL NO.          | * BODY ORIENTATION<br>(Top) (Left) (Right)<br>CSL CSL CSR |            |            |
|--------------------|---|------------|------------|
| CONNECTIONS:       | 1/2[DN15] Or 3/4[DN20]                                    |            |            |
| "A" Ø OF FLANGE    | 6.69 [170]  |            |            |
| "BB" FACE TO FACE  | CL 150 RF   | 9.91[252]  | 10.01[254] |
|                    | CL 300 RF   | 10.27[261] | 10.39[264] |
|                    | CL 600 RF   | 10.77[274] | 10.89[277] |
| "D" OVERALL LENGTH | 8.49 [216]  |            |            |
| CONNECTIONS:       | 1"[DN25] Or 1-1/4[DN32]                                   |            |            |
| "A" Ø OF FLANGE    | 8.11 [206]  |            |            |
| "BB" FACE TO FACE  | CL 150 RF   | 11.85[301] | 11.97[304] |
|                    | CL 300 RF   | 12.35[314] | 12.59[320] |
|                    | CL 600 RF   | 12.85[326] | 13.21[336] |
| "D" OVERALL LENGTH | 10.03 [255]   |            |            |
| CONNECTIONS:       | 1-1/2[DN40] Or 2[DN50]                                    |            |            |
| "A" Ø OF FLANGE    | 10.79 [274]   |            |            |
| "BB" FACE TO FACE  | CL 150 RF   | 15.02[382] | 14.90[378] |
|                    | CL 300 RF   | 15.52[394] | 15.40[391] |
|                    | CL 600 RF   | 16.14[410] | 16.16[411] |
| "D" OVERALL LENGTH | 14.25 [362]   |            |            |
| WEIGHT, lbs[kg]    | 3/4 CL 600  | 35 [16]    |            |
|                    | 1-1/4 CL 600  | 57 [26]    |            |
|                    | 2 CL 600  | 120 [55]   |            |

## DESIGN INFORMATION

|   |                                       |
|---|---------------------------------------|
| MAXIMUM ALLOWABLE PRESSURE(VESSEL DESIGN) | 600 psi at 650°F<br>[41 bar at 343°C] |
|---|---------------------------------------|

**Armstrong International, Inc.**  
 Three Rivers Division  
 Three Rivers, MI 49093  
 (269) 273-1415 Fax(269) 278-6555  
 Posted on Armstrong's homepage [www.armstronginternational.com](http://www.armstronginternational.com)

| Product                        | CD No. | Date        |
|--------------------------------|--------|-------------|
| F&T<br>CS SERIES<br>RF FLANGES | 1158   | 10/31/02    |
| Rev; B                         | sht. 1 | By; Paul G. |

# DIMENSIONS & DATA CERTIFIED FOR:

Representative:

Order:

Customer:

Order:

Project:

Requirements:

By:

Date:

## LIST OF MATERIALS:

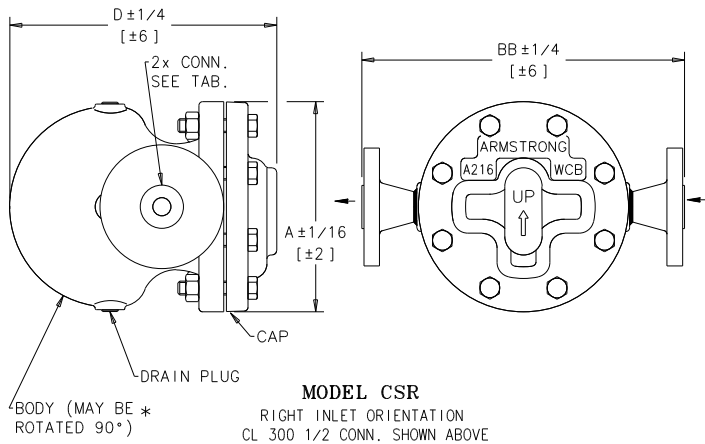
| NAME OF PART       | MATERIAL                       |
|--------------------|--------------------------------|
| CAP & BODY         | ASTM A216 WCB                  |
| GASKET, BODY       | GRAPHITE BONDED                |
| BOLT (8)           | ASTM A193 GR. B7               |
| NUT (8)            | ASTM A194 GR. 2H               |
| SEAT, VALVE        | ASTM A582 T303                 |
| VALVE              | ASTM A582 T440F/ASTM A564 T630 |
| RETAINER, VALVE    | ASTM A167 T302                 |
| PIVOT PIN          | ASTM A580 T304                 |
| FLOAT              | ASTM A167 T304                 |
| LEVER ASS'Y        |                                |
| WT ASS'Y           | T304 S.S.                      |
| GASKET, WT         | 18-8 S.S.                      |
| NAME PLATE         | ALUMINUM                       |
| PLUG, DRAIN NPT(3) | CARBON STEEL                   |

## TECHNICAL INFORMATION

| MODEL NO.                        | * BODY ORIENTATION<br>(Top) (Left) (Right)<br>CST CSL CSR |            |            |
|----------------------------------|---|------------|------------|
| CONNECTIONS:                     | 1/2[DN15] Or 3/4[DN20]                                    |            |            |
| "A" $\phi$ OF FLANGE             | 6.69 [170]  |            |            |
| "BB" FACE TO FACE                | CL 150 RF   | 9.91[252]  | 10.01[254] |
|                                  | CL 300 RF   | 10.27[261] | 10.39[264] |
|                                  | CL 600 RF   | 10.77[274] | 10.89[277] |
| "D" OVERALL LENGTH               | 8.49 [216]  |            |            |
| CONNECTIONS:                     | 1"[DN25] Or 1-1/4[DN32]                                   |            |            |
| "A" $\phi$ OF FLANGE             | 8.11 [206]  |            |            |
| "BB" FACE TO FACE                | CL 150 RF   | 11.85[301] | 11.97[304] |
|                                  | CL 300 RF   | 12.35[314] | 12.59[320] |
|                                  | CL 600 RF   | 12.85[326] | 13.21[336] |
| "D" OVERALL LENGTH               | 10.03 [255]   |            |            |
| CONNECTIONS:                     | 1-1/2[DN40] Or 2[DN50]                                    |            |            |
| "A" $\phi$ OF FLANGE             | 10.79 [274]   |            |            |
| "BB" FACE TO FACE                | CL 150 RF   | 15.02[382] | 14.90[378] |
|                                  | CL 300 RF   | 15.52[394] | 15.40[391] |
|                                  | CL 600 RF   | 16.14[410] | 16.16[411] |
| "D" OVERALL LENGTH               | 14.25 [362]   |            |            |
| WEIGHT, lbs[kg]<br>$\pm 4$ [2kg] | 3/4 CL 600  | 35 [16]    |            |
|                                  | 1-1/4 CL 600  | 57 [26]    |            |
|                                  | 2 CL 600  | 120 [55]   |            |

## DESIGN INFORMATION

|  |                                       |
|--|---------------------------------------|
| MAXIMUM ALLOWABLE PRESSURE (VESSEL DESIGN) | 600 psi at 650°F<br>[41 bar at 343°C] |
|--|---------------------------------------|



| OPT IONS:        |                                     |
|------------------|-------------------------------------|
| BODY ORIENTATION | CST(Top) <input type="checkbox"/>   |
|                  | CSL(Left) <input type="checkbox"/>  |
|                  | CSR(Right) <input type="checkbox"/> |

Dimensions Are In Inches[mm]  
ANSI B16.11