

DIMENSIONS & DATA CERTIFIED FOR:

Representative:

Order:

Customer:

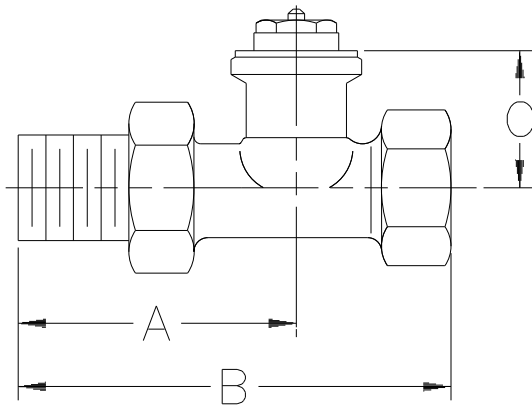
Order:

Project:

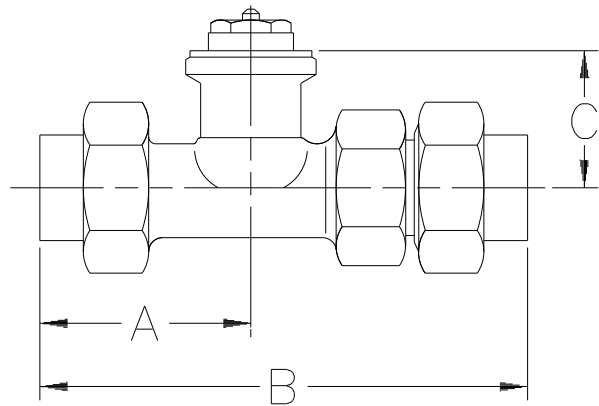
Requirements:

By:

Date:



RV-4 STRAIGHT



RV-4 STRAIGHT SOLDER


Dimensions				
Pattern	Straight			
Size	1/2" [15]	3/4" [20]	1" [25]	1-1/4" [32]
"A"	2-15/16" [75mm]	2-1/2" [63mm]	3-1/8" [79mm]	3-9/16" [90mm]
"B"	3-3/4" [95mm]	4-3/16" [106mm]	4-15/16" [125mm]	6" [152mm]
"C"	1-1/8" [29mm]	1-1/8" [29mm]	1-1/8" [29mm]	1-3/8" [35mm]
Weight	3/4 lbs [0.3 kgs]	1 lb [0.5 kgs]	1-1/2 lbs [0.7 kgs]	1-3/4 lbs [0.8 kgs]

Dimensions		
Pattern	Straight Solder	
Size	1/2" [15]	3/4" [20]
"A"	1-7/8" [48mm]	2-5/32" [55mm]
"B"	4-7/16" [113mm]	5-1/4" [133mm]
"C"	1-1/4" [32mm]	1-5/32" [29mm]
Weight	3/4 lbs [0.3 kgs]	1 lb [0.5 kgs]

Specifications			
Maximum Steam	Maximum Temperature	Maximum Differential (Water)	Maximum Static Pressure
15 psi [1 bar]	250 °F [121 °C]	15 psi [1 bar]	150 psi [10 bar]

NOTE: 1) "A" Insert is standard on all valves.
 2) "S" Insert provides longer life on steam service.

Materials	
Valve Body	Brass (Nickel Plated)
"A" Insert	See CDY1060
"S" Insert	See CDY1061



Armstrong Pressure/Temperature Group
 221 Armstrong Blvd.,
 Three Rivers, MI. 49093
Armstrong (269) 279-3600 Fax(269) 273-8656
 Posted on Armstrong's homepage www.armstrong-intl.com

Product	CDY No.	Date
RV-4 STRAIGHT	1050	3/10/98
		Rev. A