

# DIMENSIONS & DATA CERTIFIED FOR:

Representative:

Order:

Customer:

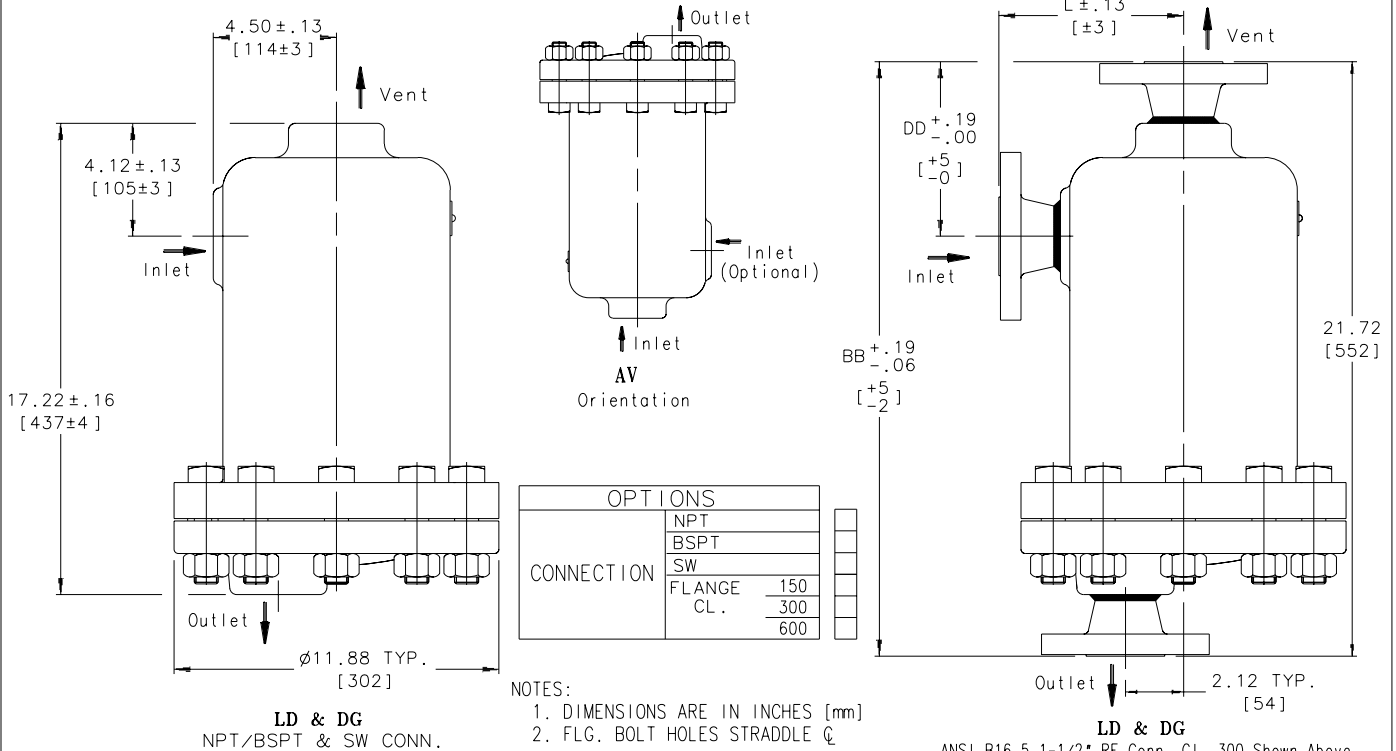
Order:

Project:

Requirements:

By:

Date:



MODEL NO.: 36-LD/AV & DG				WEIGHT ±4 lb[2kg]	
CONNECTIONS: 1-1/2" [DN40] & 2" [DN50]				W/ Flg	W/ Out Flg
"BB" (HEIGHT, FLANGED)	1-1/2"	CL	22-7/32[564]	184 lb[84kg]	172 lb[78kg]
	2"	150	21-3/32[536]		
	1-1/2"	CL	21-3/4[552]		
	2"	300	21-9/16[548]		
"L" (FLANGE TO $\phi$ OF BODY)	1-1/2"	CL	22-11/32[568]	196 lb[89kg]	
	2"	600	22-3/8[568]	201 lb[91kg]	
	1-1/2"	CL	6-1/2[165]		
	2"	150	6-7/16[164]		
"DD" (HEIGHT, FLANGED)	1-1/2"	CL	6-1/8[156]		
	2"	150	6-1/16[154]		
	1-1/2"	CL	6-3/8[162]		
	2"	300	6-5/16[160]		
	1-1/2"	CL	6-11/16[170]		
	2"	600	6-11/16[170]		

LIST OF MATERIALS	
CAP & BODY	ASTM A351 GR. CF8M
GASKET, BODY	GARLOCK, NON-ASBESTOS
BOLT (8)	ASTM A193 GR. B8M
NUT (8)	ASTM A194 GR. 8M
BOLT (8) OR	ASTM A193 GR. B7
NUT (8)	ASTM A194 GR. 2H
SEAT, VALVE	ASTM A276 T316 SS
GUIDE PLATE/ADAPTOR ASS'Y	T304 SS
SCREWS, VALVE GUIDE	T430 SS
VALVE	ASTM A580 T316 SS
LEVER, VALVE	ASTM A167 T316 SS
RETAINER, VALVE	T316 SS
FLOAT	T316L SS

MAX. ALLOWABLE PRESSURE (VESSEL DESIGN) 725 psi at 100°F [49 bar at 38°C]

Armstrong International, Inc.  
 Three Rivers Division  
 Three Rivers, MI 49093  
**Armstrong** (616) 273-1415 Fax(616) 278-6555  
 Posted on Armstrong's homepage [www.armstrong-intl.com](http://www.armstrong-intl.com)

Product	CD No.	Date
TRAP, 36-LD/AV & DG T316	1075	10/20/99
		Rev. B