

DIMENSIONS & DATA CERTIFIED FOR:

Representative:

Order:

Customer:

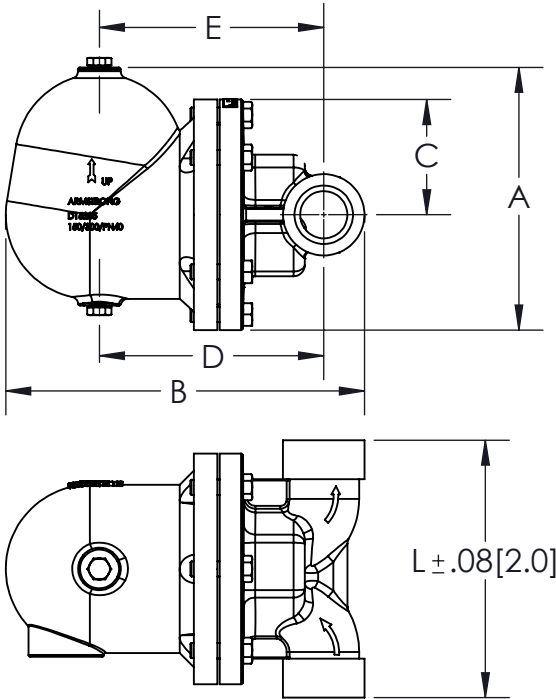
Order:

Project:

Requirements:

By:

Date:



LIST OF MATERIALS

NAME OF PART	MATERIAL
CAP	ASTM A-352 Gr. LCB
BODY	ASTM A-352 Gr. LCB
GASKET	GRAPHITE
MECHANISM	STAINLESS STEEL
FLOAT	STAINLESS STEEL
THERMOSTATIC AIRVENT	STAINLESS STEEL
BOLT	ASTM A193 GR.B7

TECHNICAL INFORMATION

MODEL	ICS F+T
PIPE CONNECTION SW & SCREWED	1/2 [DN15] - 2 [DN50]

DESIGN INFORMATION

MAX. ALLOWABLE PRESSURE (VESSEL DESIGN)	580 psig @ 650°F [40 barg @ 345°C]
--	---------------------------------------

OPTIONS

CONDENSATE COLLECTOR (CC)

VACUUM BREAKER (VB)

DESCRIPTION	DIMENSIONS				
	1/2" [DN15]	3/4" [DN20]	1" [25NB]	1-1/2" [DN40]	2" [50NB]
CONNECTION	1/2" [DN15]	3/4" [DN20]	1" [25NB]	1-1/2" [DN40]	2" [50NB]
"A" (HEIGHT)	7.4 [188]	7.4 [188]	7.9 [203]	10.9 [278]	10.9 [278]
"B" (LENGTH)	10.95 [278]	10.95 [278]	12.36 [314]	14.72 [374]	14.94 [380]
"C" (TOP TO CL INLET)	2.8 [70]	2.8 [70]	3.2 [80]	4.8 [122]	4.8 [122]
"D" (BOT TO CL INLET)	8.4 [213]	8.4 [213]	9.2 [233]	9.4 [238]	9.4 [238]
"E" (VENT TO CL INLET)	6.8 [173]	6.8 [173]	7.6 [198]	9.4 [238]	9.4 [238]
"L" (FACE TO FACE)	5.9 [184]	7.01 [178]	7.4 [188]	10.47 [266]	10.73 [273]
FLOW	LEFT TO RIGHT	LEFT TO RIGHT	LEFT TO RIGHT	RIGHT TO LEFT	RIGHT TO LEFT
WEIGHT [Kgs]	21 [10]	21 [10]	28 [13]	76 [35]	76 [35]
MAXIMUM OPERATING PRESSURE	465 psig [32 barg]				

Dimensions Are In Inches [mm]



Product

ENGLISH

CD No.

Rev;

Date

ICS F+T 1/2 THRU 2 SW/NPT/BSPT

WEB
Y|N

CD2829

A

5/12/2014

SHEET 1 OF 1

By: NR