

# DIMENSIONS & DATA CERTIFIED FOR:

Representative:

Order:

Customer:

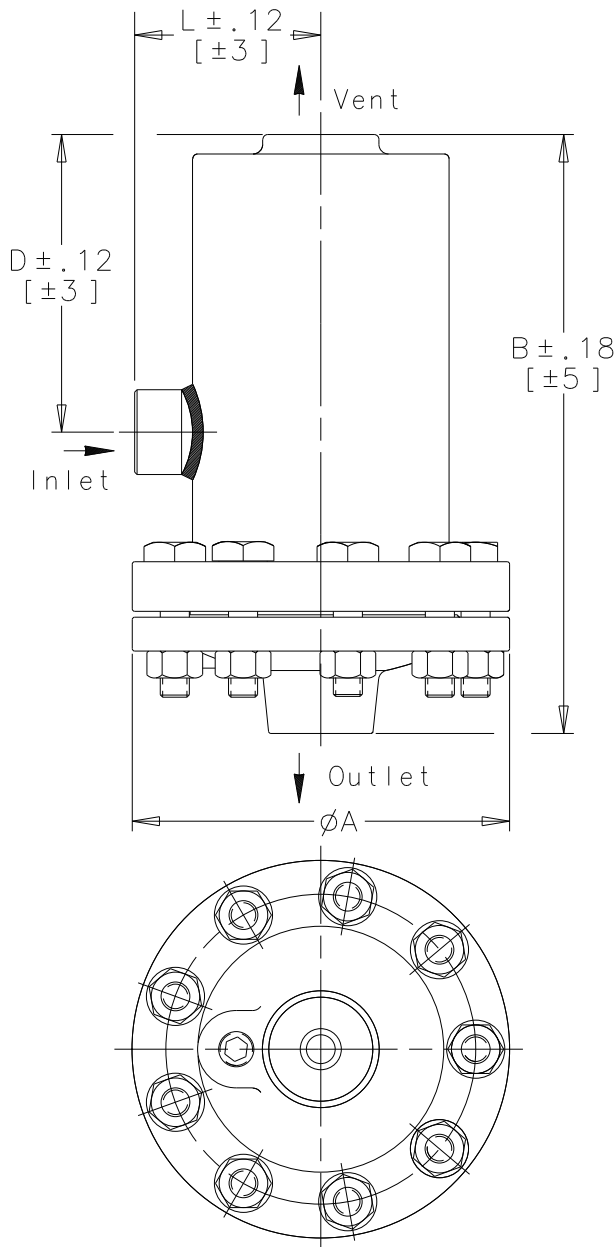
Order:

Project:

Requirements:

By:

Date:



Dimensions Are In Inches[mm]

## LIST OF MATERIALS:

NAME OF PART	MATERIAL
CAP & BODY	ASTM A105 (FORGED STEEL)
VALVE SEAT	HARDENED STAINLESS STEEL
VALVE	
LEVER ASS'Y	STAINLESS STEEL
FLOAT	
GASKET	GRAPHITE FOIL

## TECHNICAL INFORMATION

MODEL NO.	71-315				
CONNECTIONS	THD. SW.	3/4[DN20]	1"[DN25]	1-1/4[DN32]	1-1/2[DN40]
"A" (FLANGE Ø)	9-3/4 [248]				
"B" (HEIGHT)	15-15/32 [393]				
"D" (BOTTOM TO Q INLET)	7-11/16 [195]				
"L" (Q OF TRAP TO INLET)	4-5/16[109]	4-5/8[117]	4-13/16[122]	4-15/16[125]	
WEIGHT	92 lbs [42 kgs]				

## DESIGN INFORMATION

MAX. ALLOWABLE PRESSURE (VESSEL DESIGN)	1000 psig @ 100°F [68 bar @ 38°C] 600 psig @ 750°F [41 bar @ 399°C]
---	--



Product

ENGLISH

CD No.

Date

DRAINER  
71-315

WEB  
Y|N  
✓

1107

10/24/08

Rev; C

Sht. 3

By; paulg