

DIMENSIONS & DATA CERTIFIED FOR:

Representative:

Order:

Customer:

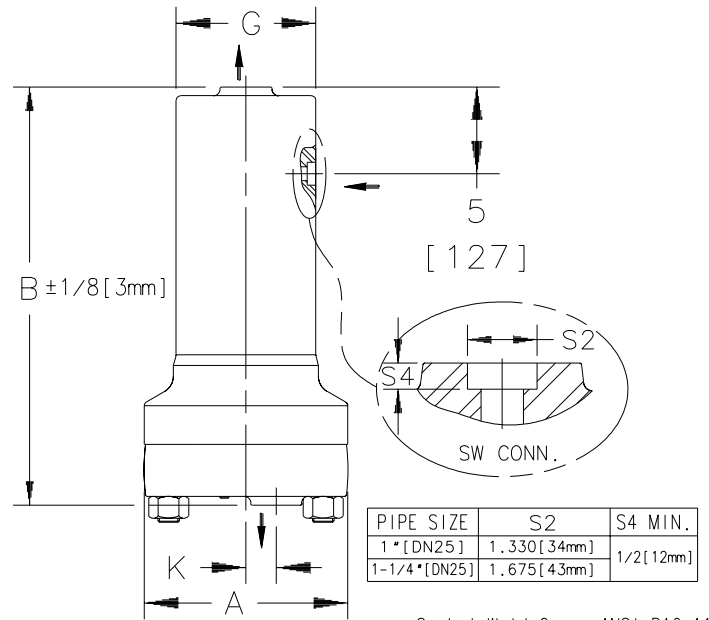
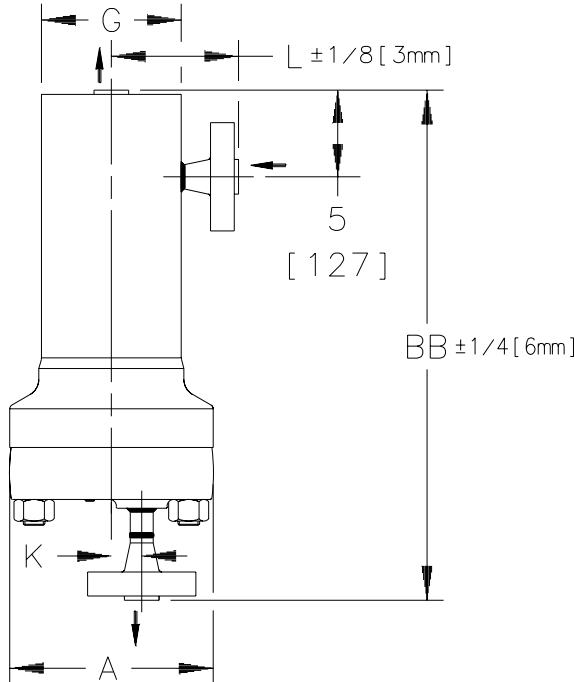
Order:

Project:

Requirements:

By:

Date:



PIPE SIZE	S2	S4 MIN.
1" [DN25]	1.330 [34mm]	1/2 [12mm]
1-1/4" [DN25]	1.675 [43mm]	

Socket Weld Conn. ANSI B16.11

Flange Conn. ANSI B16.5

Ass'y Shown Above 1" Conn. CL. 2500

MODEL NO.	MAX. OPER. PRESSURE PSIG [BAR] at SAT. STEAM	MAX. ALLOWABLE PRESSURE (Vessel Design) PSIG [BAR] of Pressure-Containing Parts at Indicated Temp. °F [°C]										
		-20 [-29]	700	750	800	850	900	950	1000			
26155G & FW	2700 [186]	650 [343]	[371]	[399]	[427]	[454]	[482]	[510]	[538]	3090 [213]	2410 [166]	1650 [114]

LIST OF MATERIALS

CAP & BODY FORGING	ASTM A-182 F22 CLASS 3
GASKET, BODY	SPIRAL WOUND STN. STL. NON-ASBESTOS
STUDS (10)	ASTM A-193 GR. B16
NUTS (10)	ASTM A-194 GR. 2H
SEAT, VALVE	HARDENED STAINLESS STEEL
RETAINER, SEAT	STAINLESS STEEL
GASKET, SEAT	MONEL
SCREWS, RETAINER	ASTM A-193 GR. B7
VALVE	HARDENED STAINLESS STEEL
LEVER, VALVE	
RETAINER, VALVE	STAINLESS STEEL
GUIDE PIN ASSEMBLY	
FLOAT	STN. STL. W/ 316 STN. STL. WEIGHT

OPTIONS

CONNECTIONS	SOCKET WELD	<input type="checkbox"/>
	NPT	<input type="checkbox"/>
	BS	<input type="checkbox"/>
	FLANGED (RAISED FACE or RING JOINT)	<input type="checkbox"/>
CLASS	900/1500	<input type="checkbox"/> 1500 <input type="checkbox"/>

- NOTE:
1. DIMENSIONS ARE IN INCHES
 2. FLG. BOLT HOLES STRADDLE \emptyset

MODEL NO.	SW FLANGE	26155G
		26155G FW
CONNECTIONS		1" [DN25], 1-1/4" [DN32]
"A" (FLANGE, BODY DIA.)		11-3/4 [298mm]
"B" (HEIGHT, SW)		24-1/8 [613mm]
"BB" (HEIGHT, FLANGED)	CLASS 1"	28-13/16 [732mm]
	CLASS 900/1500	1-1/4" 29-7/16 [748mm]
"L" (FLANGE TO \emptyset OF BODY)	CLASS 1"	29-7/16 [748mm]
	CLASS 2500	1-1/4" 29-11/16 [754mm]
CLASS 900/1500		1" & 1-1/4" 6-23/32 [171mm]
"G" (BODY OD)	CLASS 1"	7-11/32 [186mm]
	CLASS 2500	1-1/4" 7-19/32 [193mm]
"K" (\emptyset OUTLET TO \emptyset INLET)		8-1/16 [205mm]
WEIGHT [kgs]	SW	1-3/4 [44mm]
	FLANGED	295 lb [134]
		1" 307 lb [140] ± 4 lb [2]
	1-1/4" 310 lb [141]	



Armstrong International, Inc.
Three Rivers Division
Three Rivers, MI 49093

Armstrong (616) 273-1415 Fax (616) 278-6555
Posted on Armstrong's homepage www.armstrong-intl.com

Product	CD No.	Date
DRAINER		6/5/97
26155G & FW HLS SOCKET WELD & FLANGED	1094	Rev. A