

DIMENSIONS & DATA CERTIFIED FOR:

Representative:

Order:

Customer:

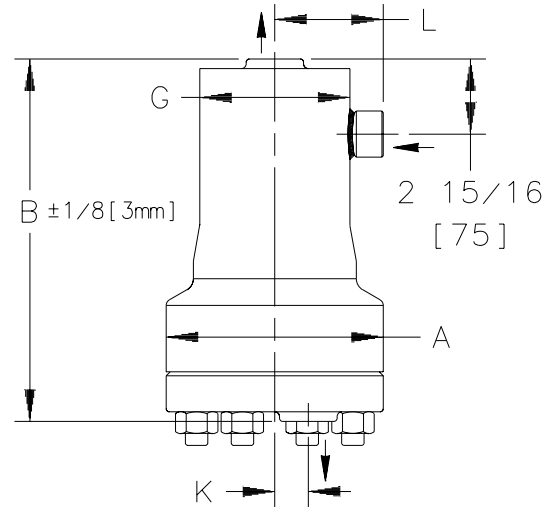
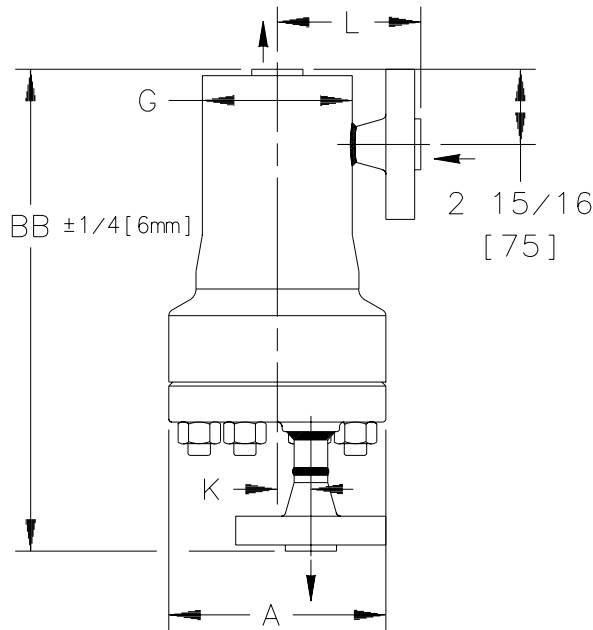
Order:

Project:

Requirements:

By:

Date:



Socket Weld Conn. ANSI B16.11

Flange Conn. ANSI B16.5 Dimensions B & BB ±1/4" [6mm]

MODEL NO.	MAX. OPER. PRESSURE PSIG [BAR] at SAT. STEAM	MAX. ALLOWABLE PRESSURE (Vessel Design) PSIG [BAR] of Pressure-Containing Parts at Indicated Temp. °F [°C]								
		-20 [-29]	650 [343]	700 [371]	750 [399]	800 [427]	850 [454]	900 [482]	950 [510]	1000 [538]
25133G	1500 [103.5]		2120 [146]			1990 [137]	1730 [119]	1350 [93]	930 [64]	

LIST OF MATERIALS

CAP & BODY FORGING	ASTM A-182 F22 CLASS 3
GASKET, BODY	SPIRAL WOUND STN. STL. NON-ASBESTOS
STUDS (8)	ASTM A-193 GR. B16
NUTS (8)	ASTM A-194 GR. 2H
SEAT, VALVE	HARDENED STAINLESS STEEL
RETAINER, SEAT	STAINLESS STEEL
GASKET, SEAT	MONEL
SCREWS, RETAINER	ASTM A-193 GR. B7
VALVE	HARDENED STAINLESS STEEL
LEVER, VALVE	
RETAINER, VALVE	STAINLESS STEEL
GUIDE PIN ASSEMBLY	
FLOAT	STN. STL. W/ 316 STN. STL. WEIGHT

OPTIONS

CONNECTIONS	<input type="checkbox"/> SOCKET WELD
	<input type="checkbox"/> NPT
	<input type="checkbox"/> BS
	<input type="checkbox"/> FLANGED (RAISED FACE or RING JOINT)
CLASS	600 <input type="checkbox"/> 900/1500 <input type="checkbox"/> 1500 <input type="checkbox"/>

- NOTE:
1. DIMENSIONS ARE IN INCHES
 2. FLG. BOLT HOLES STRADDLE \varnothing

MODEL NO.	NPT, BS, SW FLANGE	25133G 25133G FW
CONNECTIONS		1/2"[DN15], 3/4"[DN20], 1"[DN25]
"A" (FLANGE, BODY DIA.)		8-1/2 [216mm]
"B" (HEIGHT, NPT, BS & SW)		14-1/4 [362mm]
"BB" (HEIGHT, FLANGED)	CLASS 600	1/2" 18-3/16 [462mm]
		3/4" 18-1/4 [464mm]
	CLASS 900/1500	1" 18-7/16 [468mm]
		1/2" 18-1/2 [470mm]
"L" (FLANGE TO \varnothing OF BODY)	CLASS 1500	3/4" 5-1/2 [140mm]
		1" 5-5/8 [143mm]
		1/2" 3-7/8 [98mm]
"L" (COUPLER TO \varnothing OF BODY)		3/4" 3-15/16 [100mm]
		1" 4-1/4 [108mm]
"G" (BODY OD)		5-3/4 [146mm]
"K" (\varnothing OUTLET TO \varnothing INLET)		1-5/16 [33mm]
WEIGHT NPT, BS & SW (LBS)		113 [44.5kg]
WEIGHT, FLANGED (LBS)		120 [47.6kg] ±4 [2kg]



Armstrong International, Inc.
Three Rivers Division
Three Rivers, MI 49093
(616) 273-1415 Fax (616) 278-6555

Product	CD No.	Date
DRAINER		2/10/97
25133G & FW HLS SCREWED, SOCKET WELD & FLANGED	1073	Rev. A