

DIMENSIONS & DATA CERTIFIED FOR:

Representative:

Order:

Customer:

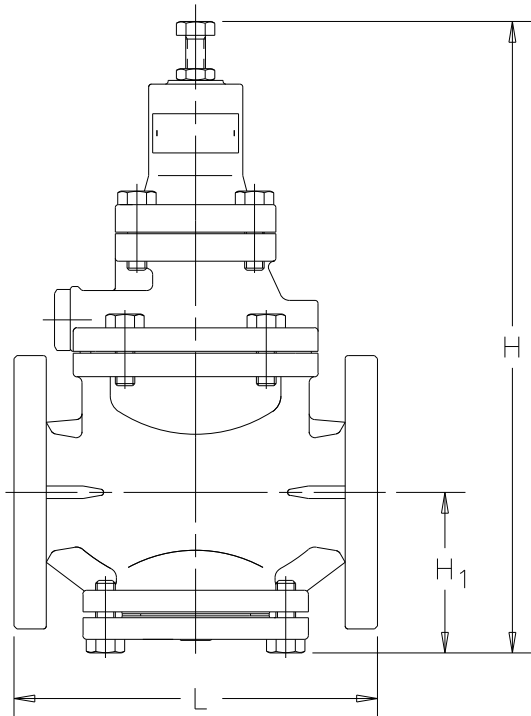
Order:

Project:

Requirements:

By:

Date:



DIMENSIONS & WEIGHTS					
CONN. SIZE	L	H	H ₁	WEIGHT	Cv [Kv]
1/2" [15]	7 [178]	11-1/4 [285]	2-5/8 [64]	15.4 lb [7.0 kg]	1.0 [0.9]
3/4" [20]	7 [178]	11-1/4 [285]	2-5/8 [64]	15.4 lb [7.0 kg]	2.3 [2.0]
1" [25]	7-1/4 [184]	11-7/8 [300]	2-3/4 [67]	18.7 lb [8.5 kg]	4.0 [3.5]
1-1/4 [32]	8-1/2 [216]	12-3/4 [323]	3-1/4 [82]	26.5 lb [12.0 kg]	6.5 [5.6]
1-1/2 [40]	8-1/2 [216]	12-3/4 [323]	3-1/4 [82]	27.6 lb [12.5 kg]	9.0 [7.8]
2" [50]	10 [254]	13-3/4 [347]	3-3/4 [93]	39.7 lb [18.0 kg]	16.0 [13.9]

DIMENSIONS IN [] ARE METRIC

NOTES:

1. ALL VALVES ARE FLANGED AND SUPPLIED WITH NPT COMPANION FLANGES, GASKET, AND BOLTS (NOT SHOWN). "L" DIMENSIONS INCLUDE THE COMPANION FLANGES.
2. MAXIMUM REDUCTION RATIO 20-1.

LIST OF MATERIALS

BODY	STAINLESS STEEL AISI 304
MAIN VALVE	STAINLESS STEEL AISI 420
MAIN VALVE SEAT	STAINLESS STEEL AISI 420
PILOT VALVE	STAINLESS STEEL AISI 420
PILOT VALVE SEAT	STAINLESS STEEL AISI 420
DIAPHRAGM	STAINLESS STEEL AISI 301
PISTON	STAINLESS STEEL AISI 420
CYLINDER	STAINLESS STEEL AISI 420
BOLTING	STAINLESS STEEL AISI 420

NOTE: GP1000SS MODEL IS ALL STAINLESS STEEL EXCEPT SPRING HOUSING ASSEMBLY.

SPECIFICATIONS

APPLICATION	STEAM
INLET PRESSURE	15 - 150 psig [1 - 10 bar]
REDUCED PRESSURE	5 - 125 psig [0.5 - 9 bar]
MAX. TEMPERATURE	450°F [232°C]
MIN. DIFFERENTIAL	7 psig [0.5 bar]



Armstrong Pressure/Temperature Group
221 Armstrong Blvd.,
Three Rivers, MI. 49093
Armstrong (269)279-3600 Fax(269)273-8656
Posted on Armstrong's homepage www.armstrong-intl.com

Product	CDY No.	Date
GP-1000SS, GP-1000AS	1081	1/17/01
		Rev. B