

DIMENSIONS & DATA CERTIFIED FOR:

Representative:

Order:

Customer:

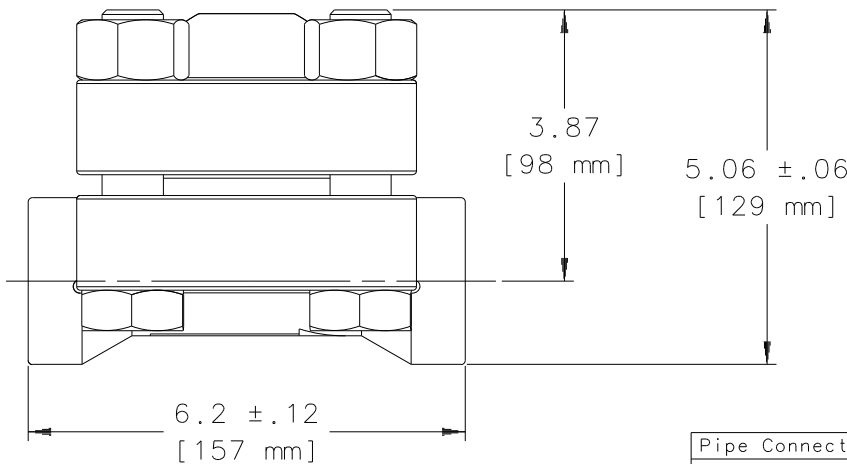
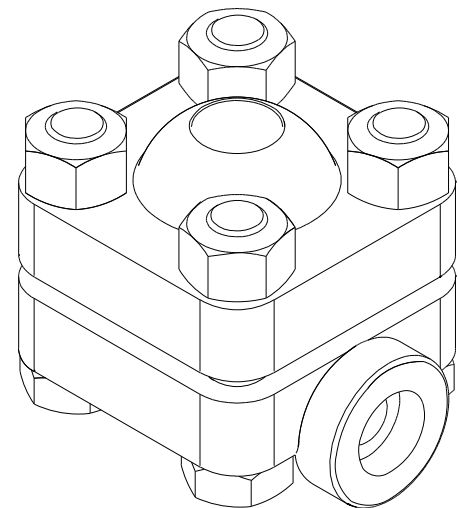
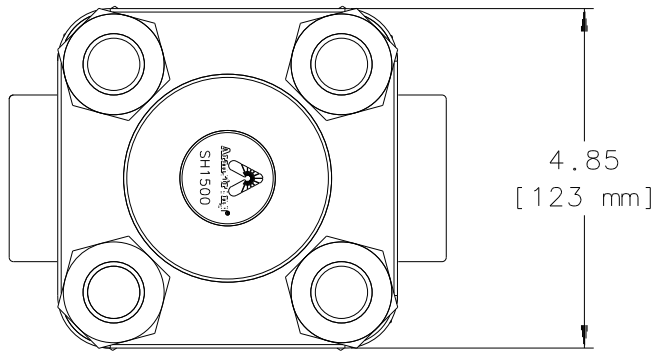
Order:

Project:

Requirements:


By:

Date:



LIST OF MATERIALS	
NAME OF PART	MATERIAL
Body	ASTM A217 GR. C12A
Cap	ASTM A217 GR. C12A
Strainer Screen	Stn. Stl. .045 Perforation
Gasket	Graphite
Bolting	ASTM A193 Grade B8C
Nuts	ASTM A194 Grade 2H
Element Assembly	
Valve	Titanium
Seat	Titanium
Seat Nut	Stn. Stl.
Guide	Stn. Stl.
Elements	Ni-Cr
Spacer	Stn. Stl.
Pins	Stn. Stl.
End Cap	Stn. Stl.
Jam Nut	Stn. Stl.

Pipe Connections	
3/4 Socket Weld [DN20]	
1" Socket Weld [DN25]	
3/4 Butt Weld [DN20]	
1" Butt Weld [DN25]	
Weight	23 lbs [10.4 kgs]
Maximum Allowable Pressure (Vessel Design)	1800 psig at 1050 °F [124 bar at 566 °C]
Minimum Operating Pressure	600 psi [41 bar]
Maximum Operating Pressure	1800 psi [124 bar]

 Armstrong	Armstrong International, Inc. Three Rivers Division Three Rivers, MI 49093 (269) 273-1415 Fax(269) 278-6555 Posted on Armstrong's homepage www.armstrong-intl.com	
	Product	CD No.
BI-METALLIC TRAP MODEL SH1500	1234	Date 11/11/04 Rev. A