

DIMENSIONS & DATA CERTIFIED FOR:

Representative:

Order:

Customer:

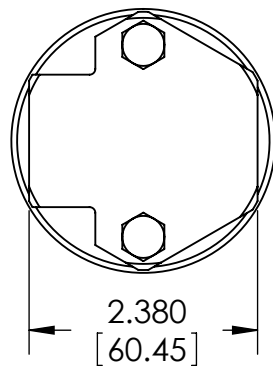
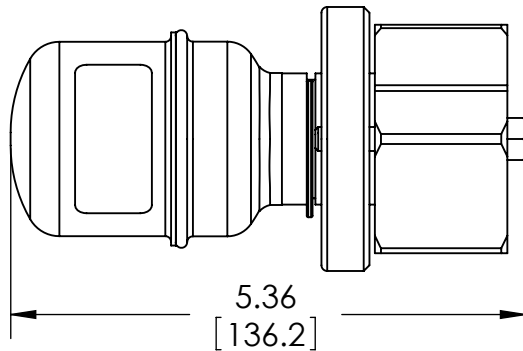
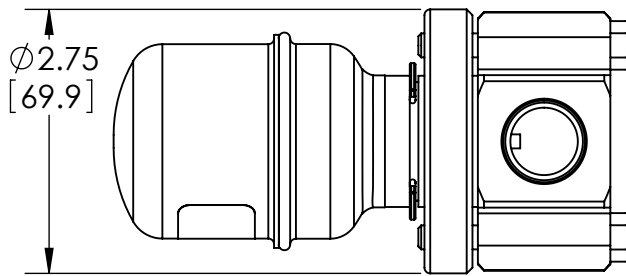
Order:

Project:

Requirements:

By:

Date:



Dimensions Are In Inches [mm]

LIST OF MATERIALS SH2000

NAME OF PART	MATERIAL
VALVE ELEMENT	STN. STL.
BODY	STN. STL.
FLANGE RETAINER RING	STN. STL.
CAP ASSEMBLY	STN. STL.
FLANGE	ASTM A105
EXTERNAL RETAINER RING	CARBON STEEL
SPIRAL WOUND GASKET	STN. STL.
SPIRAL WOUND GASKET	STN. STL.
LABEL	ALUMINUM
LIST OF MATERIALS FOR CONNECTOR BLOCK	
BODY	304 STN. STL.
BOLTS	ASTM A193, GR. B7
DESIGN INFORMATION	
MAX. OPERATING PRESSURE	MAX. ALLOWABLE PRESSURE (VESSEL DESIGN)
400 PSI [28 BAR] AT 800°F [427°C]	400 PSI [28 BAR] AT 800°F [427°C]



Product

SH2000 W/ CONNECTOR BLOCK

ENGLISH

WEB
Y|N

CD No.

CD2433

Rev;

SHEET 1 OF 1

Date

12/31/2009

By: HWN