

DIMENSIONS & DATA CERTIFIED FOR:

Representative:

Order:

Customer:

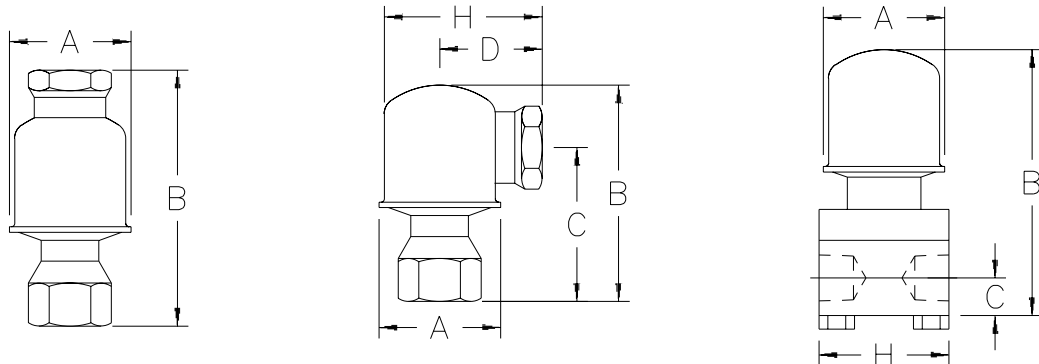
Order:

Project:

Requirements:

By:

Date:



MODEL NUMBER	TTF-1 <input type="checkbox"/>		TTF-1R <input type="checkbox"/>		TT-2000 <input type="checkbox"/>
Pipe Connections	1/2	3/4	1/2	3/4	3/8, 1/2, 3/4
"A" (Diameter)	2-1/4	2-1/4	2-1/4	2-1/4	2-1/4
"B" (Height)	4-1/2	4-11/16	3-3/4	3-15/16	5-1/4
"C" (∅ inlet to face of outlet)	—	—	2-5/8	2-13/16	1"
"D" (∅ outlet to face of inlet)	—	—	1-15/16	1-7/8	—
"H"	—	—	3-1/16	3	2-3/8
Weight (lbs)	1	1-1/4	1	1-1/4	3
Maximum Allowable Pressure (Vessel Design)	300 psig at 450°F	300 psig at 450°F	300 psig at 450°F	300 psig at 450°F	300 psig at 450°F
Maximum Operating Pressure (psi)	300	300	300	300	300

Note: Dimensions are in inches

NAME OF PART	MATERIAL
Body	304-L Stainless Steel
Connections	304 Stainless Steel
Balanced Pressure Thermostatic Air Vent	Stainless Steel and bronze with phosphor-bronze bellows, entire unit caged in stainless steel.
Gasket	Copper clad non-asbestos

Armstrong International, Inc.
 Three Rivers Division
 Three Rivers, MI 49093
 (616) 273-1415 Fax(616) 278-6555

Product	CD No.	Date
BALANCED PRESSURE BELLOWS TRAPS	1018	Rev. A