

# DIMENSIONS & DATA CERTIFIED FOR:

Representative:

Order:

Customer:

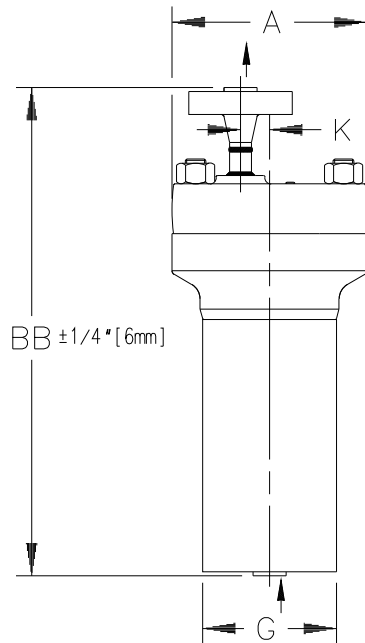
Order:

Project:

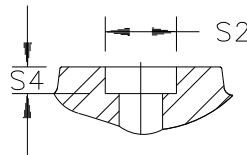
Requirements:

By:

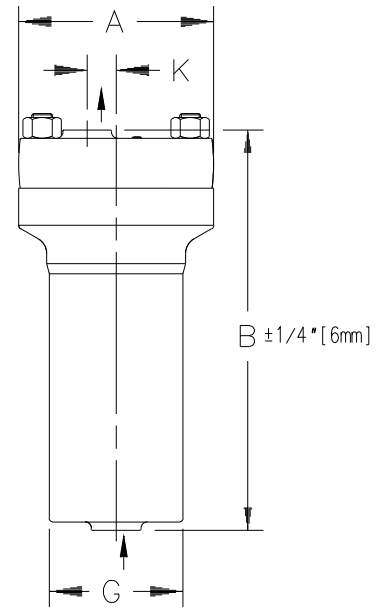
Date:



PIPE SIZE	S2	S4 MIN.
1" [DN25]	1.330 [34]	1/2 [12]
1-1/4 [DN32]	1.675 [43]	



SOCKETWELD CONN.



Flange Conn. ANSI B16.5

Ass'y Shown Above 1" Conn.

Socket Weld Conn. ANSI B16.11

MODEL NO.	MAX. OPER. PRESSURE PSIG [BAR] at SAT. STEAM	MAX. ALLOWABLE PRESSURE (Vessel Design) PSIG [BAR] of Pressure-Containing Parts at Indicated Temp. °F [°C]											
		-20[-29]	700	750	800	850	900	950	1000				
6155G & FW	2700 [186]	650 [343]	[371]	[399]	[427]	[454]	[482]	[510]	[538]	3500 [242]	3090 [213]	2410 [166]	1650 [114]

MODEL NO.	SW FLANGE	6155G
		6155G-FW
CONNECTIONS		1" [DN25] 1-1/4 [DN32]
"A" (FLANGE, BODY DIA.)		11-3/4 [298]
"B" (HEIGHT, SW)		24-1/8 [613]
"BB" (HEIGHT, CLASS 1" FLANGED) 2500 1-1/4		29-7/16 [748] 29-11/16 [754]
"G" (BODY OD)		8-1/16 [205]
"K" (Ø OUTLET TO Ø INLET)		1-3/4 [44]
	SW	295 lb [134]
WEIGHT [kgs]	FLANGED 1"	307 lb [140] ±4 lb [2]
	1-1/4"	310 lb [141]

NOTE: DIMENSIONS ARE IN INCHES

### LIST OF MATERIALS

CAP & BODY FORGING	ASTM A-182 F22 CLASS 3
INLET TUBE	STEEL PIPE
INLET TUBE/CHECK VALVE	STEEL PIPE & SS
GASKET, BODY	SPIRAL WOUND SS NON-ASBESTOS
STUDS (10)	ASTM A193 GR. B16
NUTS (10)	ASTM A194 GR. 2H
SEAT, VALVE	HARDENED ASTM B348 GR.5 TITANIUM
VALVE	
RETAINER, SEAT	SS
GASKET, SEAT	T316
SCREWS, RETAINER	ASTM A193 GR. B16
LEVER, VALVE	
RETAINER, VALVE	SS
GUIDE PIN ASSEMBLY	
BUCKET	SS W/ T316 SS WEIGHT ONLY

### OPTIONS

CONNECTIONS	SOCKET WELD	<input type="checkbox"/>
	FLANGED (RAISED FACE or RING JOINT)	<input type="checkbox"/>
INTERNAL CHECK VALVE		<input type="checkbox"/>



Armstrong International, Inc.  
Three Rivers Division  
Three Rivers, MI 49093

Armstrong (269) 273-1415 Fax (269) 278-6555  
Posted on Armstrong's homepage [www.armstrong-intl.com](http://www.armstrong-intl.com)

Product	CD No.	Date
TRAP		05/26/2011
6155G & FW SERIES	1092	Rev. B
SOCKET WELD & FLANGED		