

DIMENSIONS & DATA CERTIFIED FOR:

Representative:

Order:

Customer:

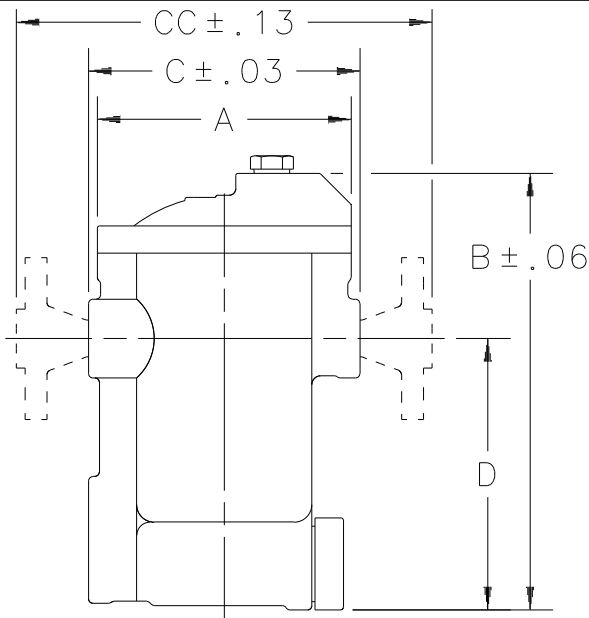
Order:

Project:

Requirements:

By:

Date:




MODEL NO.		981	983
PIPE CONNECTIONS		1/2[DN15] 3/4[DN20]	3/4[DN20] 1"[25]
TEST PLUG		1/2[DN15]	3/4[DN20]
"A" (DIAMETER)		4-1/2[114]	7-1/4[184]
"B" (HEIGHT)		8-5/8[219]	12-5/16[313]
"C" (FACE-TO-FACE SCR OR SW)		5-3/8[137]	7-3/4[197]
"D" (BOTTOM TO ϕ INLET)		4-13/16[122]	7-9/16[192]
MODEL NO.	FLG. CONNECTION TYPE	SIZE	"CC"
981	Class 150 RF	1/2[DN15]	8-1/2[216]
		3/4[DN20]	8-5/8[219]
	Class 300 RF	1/2[DN15]	8-7/8[225]
		3/4[DN20]	9[229]
	Class 600 RF	1/2[DN15]	9-3/8[238]
		3/4[DN20]	9-1/2[241]
983	Class 150 RF	3/4[DN20]	11[279]
		1"[DN25]	11-1/4[286]
	Class 300 RF	3/4[DN20]	11-3/8[289]
		1"[DN25]	11-3/4[298]
	Class 600 RF	3/4[DN20]	11-7/8[302]
		1"[DN25]	12-1/4[311]
WEIGHT:	NPT Or SW $\pm 1/4$ lbs[.1kgs]	11-1/2[5.2]	43[19.5]
	FLANGE ± 2 lb[.9 kgs]	18[8]	50[22.7]
MAXIMUM ALLOWABLE PRESSURE (VESSEL DESIGN)		600 psig [41 bar]	
MAX. OPERATING PRESSURE		at 650°F [343°C]	

NAME OF PART	MATERIAL
CAP & BODY	ASTM A216 GR. WCB
INLET TUBE	ASTM A53
GASKET	COMPRESSED NON-ASBESTOS
BOLT	ASTM A193 GR. B7
NUT	ASTM A194 GR. 2H
VALVE SEAT	ASTM A564 TYPE 630
VALVE	ASTM A564 TYPE 630
VALVE RETAINER	ASTM A240 T304
LEVER	ASTM A167 T304
GUIDE PIN ASS'Y	ASTM A580 T304
BUCKET	T304 STN. STL.
INTEGRAL STRAINER	STAINLESS STEEL
SCREEN RETAINER	ASTM A105
RETAINER GASKET 981	SPIRAL WOUND STAINLESS STEEL AND NON-ASBESTOS
RETAINER GASKET 983	COMPRESSED NON-ASBESTOS

NOTE: Dimensions Are In Inches [mm]

OPTIONS
CON - NPT, BSPT, SW, OR FLG.
INTERNAL CHECK VALVE
BVSW - LIQUID DRAINER



Armstrong International, Inc.
 Three Rivers Division
 Three Rivers, MI 49093
Armstrong (269) 273-1415 Fax(269) 278-6555
 Posted on Armstrong's homepage www.armstrong-intl.com

Product	CD No.	Date
981 & 983 INVERTED BUCKET STEAM TRAPS	1007	3/4/03
		Rev. B