

# DIMENSIONS & DATA CERTIFIED FOR:

Representative:

Order:

Customer:

Order:

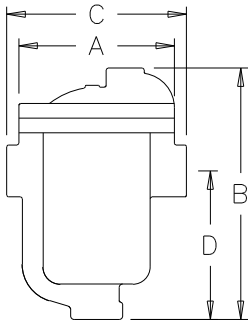
Project:

Requirements:

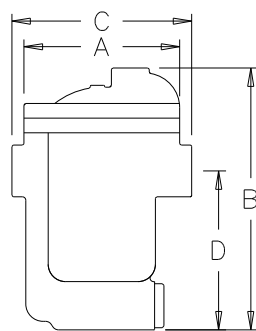
By:

Date:

**800 SERIES**



**880 SERIES**



NOTE: DIMENSIONS ARE IN INCHES [mm]

NAME OF PART	MATERIAL
CAP AND BODY	ASTM A48 CLASS 30
INLET TUBE	STEEL PIPE
GASKET	COMPRESSED NON-ASBESTOS
BOLT AND NUT SET	NO. 800, 880, 811, 881 TRAPS SAE GRADE 5. ALL OTHERS SAE GRADE 2.
NO. 815 & 816 BOLT SET	ASTM A193 GRADE B7
NO.815 NUT SET	ASTM A563 GRADE A
NO. 816 NUT SET	ASTM A194 GRADE 2H
VALVE & VALVE SEAT	HARDENED STAINLESS STEEL
VALVE RETAINER	STAINLESS STEEL
LEVER	STAINLESS STEEL
GUIDE PIN ASSEMBLY	STAINLESS STEEL
BUCKET	STAINLESS STEEL, NO'S. 814, AND LARGER BUCKETS HAVE CAST IRON WEIGHTS
BODY THIMBLE	STAINLESS STEEL
<b>880 SERIES</b>	
INTEGRAL STRAINER	STAINLESS STEEL
BUSHING	STEEL
STRAINER BUSHING GASKET	SOFT STEEL

MODEL NO.	800	811	812	813	814	815	816	880	881	882	883
PIPE CONNECTIONS	1/2, 3/4	1/2, 3/4, 1	1/2, 3/4	3/4, 1	1, 1-1/4	1, 1-1/4, 1-1/2, 2	2, 2-1/2	1/2, 3/4	1/2, 3/4, 1	1/2, 3/4	3/4, 1, 1-1/4
TEST PLUG	1/4	1/4	1/2	3/4	1	1-1/2	2	1/4	1/4	1/2	3/4
*A* (FLANGE DIAMETER)	3-3/4 [95.25]	3-3/4 [95.25]	5-5/8 [142.88]	7 [177.8]	8 [203.2]	9 [228.6]	11-1/2 [292.1]	3-3/4 [95.25]	3-3/4 [95.25]	5-5/8 [142.88]	7 [177.8]
*B* (HEIGHT)	5-7/16 [138.11]	6-7/8 [174.63]	9-1/16 [230.19]	11-3/4 [298.45]	13-5/8 [346.08]	16-1/4 [412.75]	21-5/16 [541.34]	6-1/16 [153.99]	7-1/16 [179.39]	9-3/8 [238.13]	12-3/8 [314.33]
*C* (FACE-TO FACE)	5 [127]	5 [127]	6-1/2 [165.1]	7-3/4 [196.85]	9 [228.6]	10-1/4 [260.35]	13 [330.2]	5 [127]	5 [127]	6-1/2 [165.1]	7-7/8 [200.03]
*D* (BOTTOM TO C INLET) L	2-3/4 [69.85]	4-1/4 [107.95]	5-3/8 [136.53]	7-1/32 [178.59]	7-13/16 [198.44]	8-1/16 [204.79]	11 [279.4]	3-7/16 [87.31]	4-7/16 [112.71]	5-3/4 [146.05]	7-3/8 [187.33]
NUMBER OF BOLTS	6	6	6	6	8	8	8	6	6	6	6
WEIGHT LBS [Kg]	5 [2.3Kg]	6 [2.7Kg]	15 [6.8Kg]	27-1/2 [12.5Kg]	44 [20Kg]	71 [32.2Kg]	131 [59.4Kg]	5-1/2 [2.5Kg]	6 [2.7Kg]	15-1/2 [7Kg]	31 [14.1Kg]
MAXIMUM ALLOWABLE PRESSURE (VESSEL DESIGN)	250 psig AT 450°F 17 bar AT 232°C	250 psig AT 450°F 17 bar AT 232°C	250 psig AT 450°F 17 bar AT 232°C	250 psig AT 450°F 17 bar AT 232°C	250 psig AT 450°F 17 bar AT 232°C	250 psig AT 450°F 17 bar AT 232°C	250 psig AT 450°F 17 bar AT 232°C	250 psig AT 450°F 17 bar AT 232°C	250 psig AT 450°F 17 bar AT 232°C	250 psig AT 450°F 17 bar AT 232°C	250 psig AT 450°F 17 bar AT 232°C
MAX. OPERATING PRESSURE psi [bar]	150 [10bar]	250 [17bar]	250 [17bar]	250 [17bar]	250 [17bar]	250 [17bar]	250 [17bar]	150 [10bar]	250 [17bar]	250 [17bar]	250 [17bar]

**OPTIONS**

- CONNECTIONS - NPT OR BSPT
- INTERNAL CHECK VALVE
- THERMIC VENT BUCKET
- BVSW - LIQUID DRAINER
- LARGE VENT




Armstrong International, Inc.  
Three Rivers Division  
Three Rivers, MI 49093

**Armstrong** (269) 273-1415 Fax(269) 278-6555  
Posted on Armstrong's homepage [www.armstrong-intl.com](http://www.armstrong-intl.com)

Product	CD No.	Date
800/880 SERIES INVERTED BUCKET STEAM/AIR TRAPS	1000	1/27/04
		Rev. C